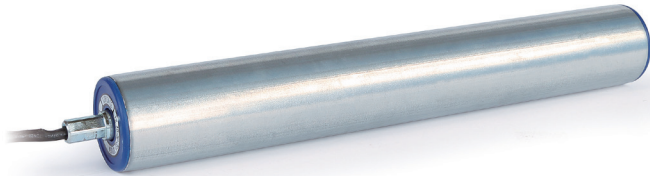


# φ48.6 DCブラシレス SENERGY

パイプ径: φ48.6  
 肉厚: 1.4t  
 電源: DC24V  
 表面処理: 溶融Zn-AL-Mg合金メッキ  
 リード線色: ブラック



■ 呼称速度: 15

DIP SW					周速				接続力 (N)		トルク (N-m)		電流値 (A)			
SW1	SW2	SW3	SW4	SW5	無負荷	定格	RUN A+B 75%	RUN B 50%	定格	起動	定格	起動	RUN A	RUN A+B	RUN B	起動
OFF	OFF	OFF	OFF	OFF	1.9	1.9										0.4
OFF	OFF	OFF	OFF	ON	2.7	2.7	2.0	2.0								0.5
OFF	OFF	OFF	ON	OFF	3.3	3.3	2.4	2.4								0.5
OFF	OFF	OFF	ON	ON	4.0	4.0	3.0	3.0	2.0	2.0						0.6
OFF	OFF	ON	OFF	OFF	4.7	4.7	3.5	3.5	2.3	2.3						0.7
OFF	OFF	ON	OFF	ON	5.4	5.4	4.0	4.0	2.7	2.7						0.7
OFF	OFF	ON	ON	OFF	6.1	6.1	4.5	4.5	3.0	3.0						0.8
OFF	OFF	ON	ON	ON	6.7	6.7	5.0	5.0	3.3	3.3						0.9
OFF	ON	OFF	OFF	OFF	7.4	7.4	5.5	5.5	3.7	3.7						0.9
OFF	ON	OFF	OFF	ON	8.1	8.1	6.0	6.0	4.0	4.0						1.0
OFF	ON	OFF	ON	OFF	8.8	8.8	6.6	6.6	4.4	4.4						1.1
OFF	ON	OFF	ON	ON	9.5	9.5	7.1	7.1	4.7	4.7						1.1
OFF	ON	ON	OFF	OFF	10.1	10.1	7.5	7.5	5.0	5.0						1.2
OFF	ON	ON	OFF	ON	10.8	10.8	8.1	8.1	5.4	5.4						1.3
OFF	ON	ON	ON	OFF	11.5	11.5	8.6	8.6	5.7	5.7						1.3
OFF	ON	ON	ON	ON	12.2	12.2	9.1	9.1	6.1	6.1						1.4
ON	OFF	OFF	OFF	OFF	12.8	12.8	9.6	9.6	6.4	6.4	122.2	674.6	2.9	16.3		1.5
ON	OFF	OFF	OFF	ON	13.5	13.5	10.1	10.1	6.7	6.7						1.6
ON	OFF	OFF	ON	OFF	14.2	14.2	10.6	10.6	7.1	7.1						1.6
ON	OFF	OFF	ON	ON	14.9	14.9	11.1	11.1	7.4	7.4						1.7
ON	OFF	ON	OFF	OFF	15.6	15.6	11.7	11.7	7.8	7.8						1.8
ON	OFF	ON	OFF	ON	16.2	16.2	12.1	12.1	8.1	8.1						1.8
ON	OFF	ON	ON	OFF	16.6	16.6	12.4	12.4	8.3	8.3						1.9
ON	OFF	ON	ON	ON	16.9	16.9	12.6	12.6	8.4	8.4						2.0
ON	ON	OFF	OFF	OFF	17.3	17.3	12.9	12.9	8.6	8.6						2.0
ON	ON	OFF	OFF	ON	17.6	17.6	13.2	13.2	8.8	8.8						2.1
ON	ON	OFF	ON	OFF	17.9	17.9	13.4	13.4	8.9	8.9						2.2
ON	ON	OFF	ON	ON	18.3	18.3	13.7	13.7	9.1	9.1						2.2
ON	ON	ON	OFF	OFF	18.6	18.6	13.9	13.9	9.3	9.3						2.3
ON	ON	ON	OFF	ON	19.0	19.0	14.2	14.2	9.5	9.5						2.4
ON	ON	ON	ON	OFF	19.3	19.3	14.4	14.4	9.6	9.6						2.4
ON	ON	ON	ON	ON	19.6	19.6	14.7	14.7	9.8	9.8						2.5

■ 呼称速度: 20

DIP SW					周速				接続力 (N)		トルク (N-m)		電流値 (A)			
SW1	SW2	SW3	SW4	SW5	無負荷	定格	RUN A+B 75%	RUN B 50%	定格	起動	定格	起動	RUN A	RUN A+B	RUN B	起動
OFF	OFF	OFF	OFF	OFF	2.6	2.6										0.4
OFF	OFF	OFF	OFF	ON	3.7	3.7	2.7	2.7								0.5
OFF	OFF	OFF	ON	OFF	4.6	4.6	3.4	3.4								0.5
OFF	OFF	OFF	ON	ON	5.5	5.5	4.1	4.1	2.7	2.7						0.6
OFF	OFF	ON	OFF	OFF	6.4	6.4	4.8	4.8	3.2	3.2						0.7
OFF	OFF	ON	OFF	ON	7.4	7.4	5.5	5.5	3.7	3.7						0.7
OFF	OFF	ON	ON	OFF	8.3	8.3	6.2	6.2	4.1	4.1						0.8
OFF	OFF	ON	ON	ON	9.2	9.2	6.9	6.9	4.6	4.6						0.9
OFF	ON	OFF	OFF	OFF	10.1	10.1	7.5	7.5	5.0	5.0						0.9
OFF	ON	OFF	OFF	ON	11.1	11.1	8.3	8.3	5.5	5.5						1.0
OFF	ON	OFF	ON	OFF	12.0	12.0	9.0	9.0	6.0	6.0						1.1
OFF	ON	OFF	ON	ON	12.9	12.9	9.6	9.6	6.4	6.4						1.1
OFF	ON	ON	OFF	OFF	13.9	13.9	10.4	10.4	6.9	6.9						1.2
OFF	ON	ON	OFF	ON	14.8	14.8	11.1	11.1	7.4	7.4						1.3
OFF	ON	ON	ON	OFF	15.7	15.7	11.7	11.7	7.8	7.8						1.3
OFF	ON	ON	ON	ON	16.6	16.6	12.4	12.4	8.3	8.3	89.4	493.8	2.1	12.0		1.4
ON	OFF	OFF	OFF	OFF	17.6	17.6	13.2	13.2	8.8	8.8						1.5
ON	OFF	OFF	OFF	ON	18.5	18.5	13.8	13.8	9.2	9.2						1.6
ON	OFF	OFF	ON	OFF	19.4	19.4	14.5	14.5	9.7	9.7						1.6
ON	OFF	OFF	ON	ON	20.3	20.3	15.2	15.2	10.1	10.1						1.7
ON	OFF	ON	OFF	OFF	21.3	21.3	15.9	15.9	10.6	10.6						1.8
ON	OFF	ON	OFF	ON	22.2	22.2	16.6	16.6	11.1	11.1						1.8
ON	OFF	ON	ON	OFF	22.7	22.7	17.0	17.0	11.3	11.3						1.9
ON	OFF	ON	ON	ON	23.1	23.1	17.3	17.3	11.5	11.5						2.0
ON	ON	OFF	OFF	OFF	23.6	23.6	17.7	17.7	11.8	11.8						2.0
ON	ON	OFF	OFF	ON	24.1	24.1	18.0	18.0	12.0	12.0						2.1
ON	ON	OFF	ON	OFF	24.5	24.5	18.3	18.3	12.2	12.2						2.2
ON	ON	OFF	ON	ON	25.0	25.0	18.7	18.7	12.5	12.5						2.2
ON	ON	ON	OFF	OFF	25.4	25.4	19.0	19.0	12.7	12.7						2.3
ON	ON	ON	OFF	ON	25.9	25.9	19.4	19.4	12.9	12.9						2.4
ON	ON	ON	ON	OFF	26.4	26.4	19.8	19.8	13.2	13.2						2.4
ON	ON	ON	ON	ON	26.8	26.8	20.1	20.1	13.4	13.4						2.5

■ 呼称速度: 25

DIP SW					周速				接続力 (N)		トルク (N-m)		電流値 (A)			
SW1	SW2	SW3	SW4	SW5	無負荷	定格	RUN A+B 75%	RUN B 50%	定格	起動	定格	起動	RUN A	RUN A+B	RUN B	起動
OFF	OFF	OFF	OFF	OFF	3.2	3.2										0.4
OFF	OFF	OFF	OFF	ON	4.5	4.5	3.3	3.3								0.5
OFF	OFF	OFF	ON	OFF	5.6	5.6	4.2	4.2								0.5
OFF	OFF	OFF	ON	ON	6.7	6.7	5.0	5.0	3.3	3.3						0.6
OFF	OFF	ON	OFF	OFF	7.9	7.9	5.9	5.9	3.9	3.9						0.7
OFF	OFF	ON	OFF	ON	9.0	9.0	6.7	6.7	4.5	4.5						0.7
OFF	OFF	ON	ON	OFF	10.1	10.1	7.5	7.5	5.0	5.0						0.8
OFF	OFF	ON	ON	ON	11.3	11.3	8.4	8.4	5.6	5.6						0.9
OFF	ON	OFF	OFF	OFF	12.4	12.4	9.3	9.3	6.2	6.2						0.9
OFF	ON	OFF	OFF	ON	13.5	13.5	10.1	10.1	6.7	6.7						1.0
OFF	ON	OFF	ON	OFF	14.7	14.7	11.0	11.0	7.3	7.3						1.1
OFF	ON	OFF	ON	ON	15.8	15.8	11.8	11.8	7.9	7.9						1.1
OFF	ON	ON	OFF	OFF	16.9	16.9	12.6	12.6	8.4	8.4						1.2
OFF	ON	ON	OFF	ON	18.0	18.0	13.5	13.5	9.0	9.0						1.3
OFF	ON	ON	ON	OFF	19.2	19.2	14.4	14.4	9.6	9.6						1.3
OFF	ON	ON	ON	ON	20.3	20.3	15.2	15.2	10.1	10.1						1.4
ON	OFF	OFF	OFF	OFF	21.4	21.4	16.0	16.0	10.7	10.7	73.3	404.7	1.7	9.8		1.5
ON	OFF	OFF	OFF	ON	22.6	22.6	16.9	16.9	11.3	11.3						1.6
ON	OFF	OFF	ON	OFF	23.7	23.7	17.7	17.7	11.8	11.8						1.6
ON	OFF	OFF	ON	ON	24.8	24.8	18.6	18.6	12.4	12.4						1.7
ON	OFF	ON	OFF	OFF	26.0	26.0	19.5	19.5	13.0	13.0						1.8
ON	OFF	ON	OFF	ON	27.1	27.1	20.3	20.3	13.5	13.5						1.8
ON	OFF	ON	ON	OFF	27.7	27.7	20.7	20.7	13.8	13.8						1.9
ON	OFF	ON	ON	ON	28.2	28.2	21.1	21.1	14.1	14.1						2.0
ON	ON	OFF	OFF	OFF	28.8	28.8	21.6	21.6	14.4	14.4						2.0
ON	ON	OFF	OFF	ON	29.4	29.4	22.0	22.0	14.7	14.7						2.1
ON	ON	OFF	ON	OFF	29.9	29.9	22.4	22.4	14.9	14.9						2.2
ON	ON	OFF	ON	ON	30.5	30.5	22.8	22.8	15.2	15.2						2.2
ON	ON	ON	OFF	OFF	31.1	31.1	23.3	23.3	15.5	15.5						2.3
ON	ON	ON	OFF	ON	31.6	31.6	23.7	23.7	15.8	15.8						2.4
ON	ON	ON	ON	OFF	32.2	32.2	24.1	24.1	16.1	16.1						2.4
ON	ON	ON	ON	ON	32.7	32.7	24.5	24.5	16.3	16.3						2.5

■ 呼称速度: 35

DIP SW					周速				接続力 (N)		トルク (N-m)		電流値 (A)			
--------	--	--	--	--	----	--	--	--	---------	--	-----------	--	---------	--	--	--

■ 呼称速度：60

DIP SW					周速				接続力 (N)		トルク (N·m)		電流値 (A)			
SW1	SW2	SW3	SW4	SW5	RUN A 100%	RUN A+B 75%	RUN B 50%	定格	定格	起動	定格	起動	RUN A	RUN A+B	RUN B	起動
OFF	OFF	OFF	OFF	OFF	8.0	8.0						0.4	—	—	—	
OFF	OFF	OFF	OFF	ON	11.1	11.1	8.3	8.3				0.5	0.4	—	—	
OFF	OFF	OFF	ON	OFF	13.9	13.9	10.4	10.4				0.5	0.5	—	—	
OFF	OFF	OFF	ON	ON	16.6	16.6	12.4	12.4	8.3	8.3		0.6	0.5	0.4	—	
OFF	OFF	ON	OFF	OFF	19.4	19.4	14.5	14.5	9.7	9.7		0.7	0.5	0.4	—	
OFF	OFF	ON	OFF	ON	22.2	22.2	16.6	16.6	11.1	11.1		0.7	0.6	0.5	—	
OFF	OFF	ON	ON	OFF	25.0	25.0	18.7	18.7	12.5	12.5		0.8	0.7	0.5	—	
OFF	OFF	ON	ON	ON	27.8	27.8	20.8	20.8	13.9	13.9		0.9	0.7	0.5	—	
OFF	ON	OFF	OFF	OFF	30.5	30.5	22.8	22.8	15.2	15.2		0.9	0.7	0.6	—	
OFF	ON	OFF	OFF	ON	33.3	33.3	24.9	24.9	16.6	16.6		1.0	0.8	0.6	—	
OFF	ON	OFF	ON	OFF	36.1	36.1	27.0	27.0	18.0	18.0		1.1	0.9	0.6	—	
OFF	ON	OFF	ON	ON	38.9	38.9	29.1	29.1	19.4	19.4		1.1	0.9	0.7	—	
OFF	ON	ON	OFF	OFF	41.7	41.7	31.2	31.2	20.8	20.8		1.2	0.9	0.7	—	
OFF	ON	ON	OFF	ON	44.4	44.4	33.3	33.3	22.2	22.2		1.3	1.0	0.7	—	
OFF	ON	ON	ON	OFF	47.2	47.2	35.4	35.4	23.6	23.6		1.3	1.0	0.8	—	
OFF	ON	ON	ON	ON	50.0	50.0	37.5	37.5	25.0	25.0		1.4	1.1	0.8	—	
ON	OFF	OFF	OFF	OFF	52.8	52.8	39.6	39.6	26.4	26.4	29.8	1.5	1.1	0.8	3.0	
ON	OFF	OFF	OFF	ON	55.6	55.6	41.7	41.7	27.8	27.8	164.6	1.6	1.2	0.9	—	
ON	OFF	OFF	ON	OFF	58.4	58.4	43.8	43.8	29.2	29.2	0.7	1.6	1.2	0.9	—	
ON	OFF	OFF	ON	ON	61.1	61.1	45.8	45.8	30.5	30.5	4.0	1.7	1.3	0.9	—	
ON	OFF	ON	OFF	OFF	63.9	63.9	47.9	47.9	31.9	31.9		1.8	1.3	1.0	—	
ON	OFF	ON	OFF	ON	66.7	66.7	50.0	50.0	33.3	33.3		1.8	1.4	1.0	—	
ON	OFF	ON	ON	OFF	68.1	68.1	51.0	51.0	34.0	34.0		1.9	1.4	1.0	—	
ON	OFF	ON	ON	ON	69.5	69.5	52.1	52.1	34.7	34.7		2.0	1.5	1.0	—	
ON	ON	OFF	OFF	OFF	70.9	70.9	53.1	53.1	35.4	35.4		2.0	1.5	1.0	—	
ON	ON	OFF	OFF	ON	72.3	72.3	54.2	54.2	36.1	36.1		2.1	1.5	1.1	—	
ON	ON	OFF	ON	OFF	73.6	73.6	55.2	55.2	36.8	36.8		2.2	1.6	1.1	—	
ON	ON	OFF	ON	ON	75.0	75.0	56.2	56.2	37.5	37.5		2.2	1.6	1.1	—	
ON	ON	ON	OFF	OFF	76.4	76.4	57.3	57.3	38.2	38.2		2.3	1.6	1.1	—	
ON	ON	ON	OFF	ON	77.8	77.8	58.3	58.3	38.9	38.9		2.4	1.6	1.1	—	
ON	ON	ON	ON	OFF	79.2	79.2	59.4	59.4	39.6	39.6		2.4	1.6	1.1	—	
ON	ON	ON	ON	ON	80.6	80.6	60.4	60.4	40.3	40.3		2.5	1.7	1.2	—	

■ 呼称速度：75

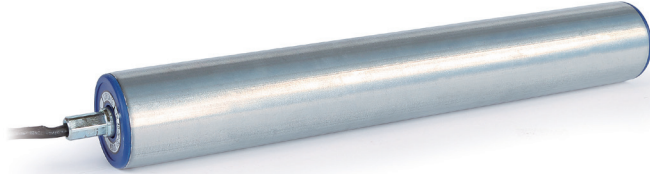
DIP SW					周速				接続力 (N)		トルク (N·m)		電流値 (A)			
SW1	SW2	SW3	SW4	SW5	RUN A 100%	RUN A+B 75%	RUN B 50%	定格	定格	起動	定格	起動	RUN A	RUN A+B	RUN B	起動
OFF	OFF	OFF	OFF	OFF	9.8	9.8						0.4	—	—	—	
OFF	OFF	OFF	OFF	ON	13.5	13.5	10.1	10.1				0.5	0.4	—	—	
OFF	OFF	OFF	ON	OFF	16.9	16.9	12.6	12.6				0.5	0.5	—	—	
OFF	OFF	OFF	ON	ON	20.3	20.3	15.2	15.2	10.1	10.1		0.6	0.5	0.4	—	
OFF	OFF	ON	OFF	OFF	23.7	23.7	17.7	17.7	11.8	11.8		0.7	0.5	0.4	—	
OFF	OFF	ON	OFF	ON	27.1	27.1	20.3	20.3	13.5	13.5		0.7	0.6	0.5	—	
OFF	OFF	ON	ON	OFF	30.5	30.5	22.8	22.8	15.2	15.2		0.8	0.7	0.5	—	
OFF	OFF	ON	ON	ON	33.9	33.9	25.4	25.4	16.9	16.9		0.9	0.7	0.5	—	
OFF	ON	OFF	OFF	OFF	37.3	37.3	27.9	27.9	18.6	18.6		0.9	0.7	0.6	—	
OFF	ON	OFF	OFF	ON	40.7	40.7	30.5	30.5	20.3	20.3		1.0	0.8	0.6	—	
OFF	ON	OFF	ON	OFF	44.1	44.1	33.0	33.0	22.0	22.0		1.1	0.9	0.6	—	
OFF	ON	OFF	ON	ON	47.5	47.5	35.6	35.6	23.7	23.7		1.1	0.9	0.7	—	
OFF	ON	ON	OFF	OFF	50.8	50.8	38.1	38.1	25.4	25.4		1.2	0.9	0.7	—	
OFF	ON	ON	OFF	ON	54.2	54.2	40.6	40.6	27.1	27.1		1.3	1.0	0.7	—	
OFF	ON	ON	ON	OFF	57.6	57.6	43.2	43.2	28.8	28.8		1.3	1.0	0.8	—	
OFF	ON	ON	ON	ON	61.0	61.0	45.7	45.7	30.5	30.5		1.4	1.1	0.8	—	
ON	OFF	OFF	OFF	OFF	64.4	64.4	48.3	48.3	32.2	32.2	24.4	1.5	1.1	0.8	3.0	
ON	OFF	OFF	OFF	ON	67.8	67.8	50.8	50.8	33.9	33.9	134.9	1.6	1.2	0.9	—	
ON	OFF	OFF	ON	OFF	71.2	71.2	53.4	53.4	35.6	35.6	0.5	1.6	1.2	0.9	—	
ON	OFF	OFF	ON	ON	74.6	74.6	55.9	55.9	37.3	37.3	3.2	1.7	1.3	0.9	—	
ON	OFF	ON	OFF	OFF	78.0	78.0	58.5	58.5	39.0	39.0		1.8	1.3	1.0	—	
ON	OFF	ON	OFF	ON	81.4	81.4	61.0	61.0	40.7	40.7		1.8	1.4	1.0	—	
ON	OFF	ON	ON	OFF	83.1	83.1	62.3	62.3	41.5	41.5		1.9	1.4	1.0	—	
ON	OFF	ON	ON	ON	84.8	84.8	63.6	63.6	42.4	42.4		2.0	1.5	1.0	—	
ON	ON	OFF	OFF	OFF	86.5	86.5	64.8	64.8	43.2	43.2		2.0	1.5	1.0	—	
ON	ON	OFF	OFF	ON	88.2	88.2	66.1	66.1	44.1	44.1		2.1	1.5	1.1	—	
ON	ON	OFF	ON	OFF	89.9	89.9	67.4	67.4	44.9	44.9		2.2	1.6	1.1	—	
ON	ON	OFF	ON	ON	91.6	91.6	68.7	68.7	45.8	45.8		2.2	1.6	1.1	—	
ON	ON	ON	OFF	OFF	93.3	93.3	69.9	69.9	46.6	46.6		2.3	1.6	1.1	—	
ON	ON	ON	OFF	ON	95.0	95.0	71.2	71.2	47.5	47.5		2.4	1.6	1.1	—	
ON	ON	ON	ON	OFF	96.6	96.6	72.4	72.4	48.3	48.3		2.4	1.6	1.1	—	
ON	ON	ON	ON	ON	98.3	98.3	73.7	73.7	49.1	49.1		2.5	1.7	1.2	—	

■ 呼称速度：95

DIP SW					周速				接続力 (N)		トルク (N·m)		電流値 (A)			
SW1	SW2	SW3	SW4	SW5	RUN A 100%	RUN A+B 75%	RUN B 50%	定格	定格	起動	定格	起動	RUN A	RUN A+B	RUN B	起動
OFF	OFF	OFF	OFF	OFF	12.9	12.9						0.4	—	—	—	
OFF	OFF	OFF	OFF	ON	17.9	17.9	13.4	13.4				0.5	0.4	—	—	
OFF	OFF	OFF	ON	OFF	22.3	22.3	16.7	16.7				0.5	0.5	—	—	
OFF	OFF	OFF	ON	ON	26.8	26.8	20.1	20.1	13.4	13.4		0.6	0.5	0.4	—	
OFF	OFF	ON	OFF	OFF	31.3	31.3	23.4	23.4	15.6	15.6		0.7	0.5	0.4	—	
OFF	OFF	ON	OFF	ON	35.8	35.8	26.8	26.8	17.9	17.9		0.7	0.6	0.5	—	
OFF	OFF	ON	ON	OFF	40.3	40.3	30.2	30.2	20.1	20.1		0.8	0.7	0.5	—	
OFF	OFF	ON	ON	ON	44.7	44.7	33.5	33.5	22.3	22.3		0.9	0.7	0.5	—	
OFF	ON	OFF	OFF	OFF	49.2	49.2	36.9	36.9	24.6	24.6		0.9	0.7	0.6	—	
OFF	ON	OFF	OFF	ON	53.7	53.7	40.2	40.2	26.8	26.8		1.0	0.8	0.6	—	
OFF	ON	OFF	ON	OFF	58.2	58.2	43.6	43.6	29.1	29.1		1.1	0.9	0.6	—	
OFF	ON	OFF	ON	ON	62.7	62.7	47.0	47.0	31.3	31.3		1.1	0.9	0.7	—	
OFF	ON	ON	OFF	OFF	67.1	67.1	50.3	50.3	33.5	33.5		1.2	0.9	0.7	—	
OFF	ON	ON	OFF	ON	71.6	71.6	53.7	53.7	35.8	35.8		1.3	1.0	0.7	—	
OFF	ON	ON	ON	OFF	76.1	76.1	57.0	57.0	38.0	38.0		1.3	1.0	0.8	—	
OFF	ON	ON	ON	ON	80.6	80.6	60.4	60.4	40.3	40.3		1.4	1.1	0.8	—	
ON	OFF	OFF	OFF	OFF	85.0	85.0	63.7	63.7	42.5	42.5	18.5	1.5	1.1	0.8	3.0	
ON	OFF	OFF	OFF	ON	89.5	89.5	67.1	67.1	44.7	44.7	102.2	1.6	1.2	0.9	—	
ON	OFF	OFF	ON	OFF	94.0	94.0	70.5	70.5	47.0	47.0	0.4	1.6	1.2	0.9	—	
ON	OFF	OFF	ON	ON	98.5	98.5	73.8	73.8	49.2	49.2	2.4	1.7	1.3	0.9	—	
ON	OFF	ON	OFF	OFF	103.0	103.0	77.2	77.2	51.5	51.5		1.8	1.3	1.0	—	
ON	OFF	ON	OFF	ON	107.4	107.4	80.5	80.5	53.7	53.7		1.8	1.4	1.0	—	
ON	OFF	ON	ON	OFF	109.7	109.7	82.2	82.2	54.8	54.8		1.9	1.4	1.0	—	
ON	OFF	ON	ON	ON	111.9	111.9	83.9	83.9	55.9	55.9		2.0	1.5	1.0	—	
ON	ON	OFF	OFF	OFF	114.2	114.2	85.6	85.6	57.1	57.1		2.0	1.5	1.0	—	
ON	ON	OFF	OFF	ON	116.4	116.4	87.3	87.3	58.2	58.2		2.1	1.5	1.1	—	
ON	ON	OFF	ON	OFF	118.6	118.6	88.9	88.9	59.3	59.3		2.2	1.6	1.1	—	
ON	ON	OFF	ON	ON	120.9	120.9	90.6	90.6	60.4	60.4		2.2	1.6	1.1	—	
ON	ON	ON	OFF	OFF	123.1	123.1	92.3	92.3	61.5	61.5		2.3	1.6	1.1	—	
ON	ON	ON	OFF	ON	125.4	125.4	94.0	94.0	62.7	62.7		2.4	1.6</			

# φ50 DCブラシレス SENERGY

パイプ径: φ50  
肉厚: 1.4t  
電源: DC24V  
表面処理: 溶融Zn-AL-Mg合金メッキ  
リード線色: ブラック



RoHS  
対応



J形コネクタ

■ 呼称速度: 20

DIP SW					周速				接続力(N)		トルク(N-m)		電流値(A)						
SW1	SW2	SW3	SW4	SW5	RUN A 100%	RUN A+B 75%	RUN B 50%	無負荷	定格	無負荷	定格	定格	起動	定格	起動	RUN A	RUN A+B	RUN B	起動
OFF	OFF	OFF	OFF	OFF	2.7	2.7									0.4	—	—	—	
OFF	OFF	OFF	OFF	ON	3.8	3.8	2.8	2.8							0.5	0.4	—	—	
OFF	OFF	OFF	ON	OFF	4.7	4.7	3.5	3.5							0.5	0.5	—	—	
OFF	OFF	OFF	ON	ON	5.7	5.7	4.2	4.2	2.8	2.8					0.6	0.5	0.4	—	
OFF	OFF	ON	OFF	OFF	6.6	6.6	4.9	4.9	3.3	3.3					0.7	0.6	0.5	0.4	
OFF	OFF	ON	OFF	ON	7.6	7.6	5.7	5.7	3.8	3.8					0.7	0.6	0.5	0.4	
OFF	OFF	ON	ON	OFF	8.5	8.5	6.3	6.3	4.2	4.2					0.8	0.7	0.5	0.4	
OFF	OFF	ON	ON	ON	9.5	9.5	7.1	7.1	4.7	4.7					0.9	0.7	0.5	0.4	
OFF	ON	OFF	OFF	OFF	10.4	10.4	7.8	7.8	5.2	5.2					0.9	0.7	0.6	0.5	
OFF	ON	OFF	OFF	ON	11.4	11.4	8.5	8.5	5.7	5.7					1.0	0.8	0.6	0.5	
OFF	ON	OFF	ON	OFF	12.3	12.3	9.2	9.2	6.1	6.1					1.1	0.9	0.6	0.5	
OFF	ON	OFF	ON	ON	13.3	13.3	9.9	9.9	6.6	6.6					1.1	0.9	0.7	0.5	
OFF	ON	ON	OFF	OFF	14.3	14.3	10.7	10.7	7.1	7.1					1.2	0.9	0.7	0.5	
OFF	ON	ON	ON	OFF	15.2	15.2	11.4	11.4	7.6	7.6					1.3	1.0	0.7	0.5	
OFF	ON	ON	ON	ON	16.2	16.2	12.1	12.1	8.1	8.1					1.3	1.0	0.8	0.6	
OFF	ON	ON	ON	ON	17.1	17.1	12.8	12.8	8.5	8.5					1.4	1.1	0.8	0.6	
ON	OFF	OFF	OFF	OFF	18.1	18.1	13.5	13.5	9.0	9.0	86.9	480.0	2.1	12.0	1.5	1.1	0.8	3.0	
ON	OFF	OFF	OFF	ON	19.0	19.0	14.2	14.2	9.5	9.5					1.6	1.2	0.9		
ON	OFF	OFF	ON	OFF	20.0	20.0	15.0	15.0	10.0	10.0					1.6	1.2	0.9		
ON	OFF	OFF	ON	ON	20.9	20.9	15.6	15.6	10.4	10.4					1.7	1.3	0.9		
ON	OFF	ON	OFF	OFF	21.9	21.9	16.4	16.4	10.9	10.9					1.8	1.3	1.0		
ON	OFF	ON	OFF	ON	22.8	22.8	17.1	17.1	11.4	11.4					1.8	1.4	1.0		
ON	OFF	ON	ON	OFF	23.3	23.3	17.4	17.4	11.6	11.6					1.9	1.4	1.0		
ON	OFF	ON	ON	ON	23.8	23.8	17.8	17.8	11.9	11.9					2.0	1.5	1.0		
ON	ON	OFF	OFF	OFF	24.3	24.3	18.2	18.2	12.1	12.1					2.0	1.5	1.0		
ON	ON	OFF	OFF	ON	24.7	24.7	18.5	18.5	12.3	12.3					2.1	1.5	1.1		
ON	ON	OFF	ON	OFF	25.2	25.2	18.9	18.9	12.6	12.6					2.2	1.6	1.1		
ON	ON	OFF	ON	ON	25.7	25.7	19.2	19.2	12.8	12.8					2.2	1.6	1.1		
ON	ON	ON	OFF	OFF	26.2	26.2	19.6	19.6	13.1	13.1					2.3	1.6	1.1		
ON	ON	ON	OFF	ON	26.7	26.7	20.0	20.0	13.3	13.3					2.4	1.6	1.1		
ON	ON	ON	ON	OFF	27.1	27.1	20.3	20.3	13.5	13.5					2.4	1.6	1.1		
ON	ON	ON	ON	ON	27.6	27.6	20.7	20.7	13.8	13.8					2.5	1.7	1.2		

■ 呼称速度: 35

DIP SW					周速				接続力(N)		トルク(N-m)		電流値(A)						
SW1	SW2	SW3	SW4	SW5	RUN A 100%	RUN A+B 75%	RUN B 50%	無負荷	定格	無負荷	定格	定格	起動	定格	起動	RUN A	RUN A+B	RUN B	起動
OFF	OFF	OFF	OFF	OFF	4.9	4.9									0.4	—	—	—	
OFF	OFF	OFF	OFF	ON	6.8	6.8	5.1	5.1							0.5	0.4	—	—	
OFF	OFF	OFF	ON	OFF	8.5	8.5	6.3	6.3							0.5	0.5	—	—	
OFF	OFF	OFF	ON	ON	10.3	10.3	7.7	7.7	5.1	5.1					0.6	0.5	0.4	—	
OFF	OFF	ON	OFF	OFF	12.0	12.0	9.0	9.0	6.0	6.0					0.7	0.5	0.4	—	
OFF	OFF	ON	OFF	ON	13.7	13.7	10.2	10.2	6.8	6.8					0.7	0.6	0.5	—	
OFF	OFF	ON	ON	OFF	15.4	15.4	11.5	11.5	7.7	7.7					0.8	0.7	0.5	—	
OFF	OFF	ON	ON	ON	17.1	17.1	12.8	12.8	8.5	8.5					0.9	0.7	0.5	—	
OFF	ON	OFF	OFF	OFF	18.8	18.8	14.1	14.1	9.4	9.4					0.9	0.7	0.6	—	
OFF	ON	OFF	OFF	ON	20.6	20.6	15.4	15.4	10.3	10.3					1.0	0.8	0.6	—	
OFF	ON	OFF	ON	OFF	22.3	22.3	16.7	16.7	11.1	11.1					1.1	0.9	0.6	—	
OFF	ON	OFF	ON	ON	24.0	24.0	18.0	18.0	12.0	12.0					1.1	0.9	0.7	—	
OFF	ON	ON	OFF	OFF	25.7	25.7	19.2	19.2	12.8	12.8					1.2	0.9	0.7	—	
OFF	ON	ON	OFF	ON	27.4	27.4	20.5	20.5	13.7	13.7					1.3	1.0	0.7	—	
OFF	ON	ON	ON	OFF	29.1	29.1	21.8	21.8	14.5	14.5					1.3	1.0	0.8	—	
OFF	ON	ON	ON	ON	30.9	30.9	23.1	23.1	15.4	15.4					1.4	1.1	0.8	—	
ON	OFF	OFF	OFF	OFF	32.6	32.6	24.4	24.4	16.3	16.3	48.3	266.6	1.2	6.6	1.5	1.1	0.8	3.0	
ON	OFF	OFF	OFF	ON	34.3	34.3	25.7	25.7	17.1	17.1					1.6	1.2	0.9		
ON	OFF	OFF	ON	OFF	36.0	36.0	27.0	27.0	18.0	18.0					1.6	1.2	0.9		
ON	OFF	OFF	ON	ON	37.7	37.7	28.2	28.2	18.8	18.8					1.7	1.3	0.9		
ON	OFF	ON	OFF	OFF	39.4	39.4	29.5	29.5	19.7	19.7					1.8	1.3	1.0		
ON	OFF	ON	OFF	ON	41.2	41.2	30.9	30.9	20.6	20.6					1.8	1.4	1.0		
ON	OFF	ON	ON	OFF	42.0	42.0	31.5	31.5	21.0	21.0					1.9	1.4	1.0		
ON	OFF	ON	ON	ON	42.9	42.9	32.1	32.1	21.4	21.4					2.0	1.5	1.0		
ON	ON	OFF	OFF	OFF	43.7	43.7	32.7	32.7	21.8	21.8					2.0	1.5	1.0		
ON	ON	OFF	OFF	ON	44.6	44.6	33.4	33.4	22.3	22.3					2.1	1.5	1.1		
ON	ON	OFF	ON	OFF	45.4	45.4	34.0	34.0	22.7	22.7					2.2	1.6	1.1		
ON	ON	OFF	ON	ON	46.3	46.3	34.7	34.7	23.1	23.1					2.2	1.6	1.1		
ON	ON	ON	OFF	OFF	47.2	47.2	35.4	35.4	23.6	23.6					2.3	1.6	1.1		
ON	ON	ON	OFF	ON	48.0	48.0	36.0	36.0	24.0	24.0					2.4	1.6	1.1		
ON	ON	ON	ON	OFF	48.9	48.9	36.6	36.6	24.4	24.4					2.4	1.6	1.1		
ON	ON	ON	ON	ON	49.7	49.7	37.2	37.2	24.8	24.8					2.5	1.7	1.2		

■ 呼称速度: 15

DIP SW					周速				接続力(N)		トルク(N-m)		電流値(A)						
SW1	SW2	SW3	SW4	SW5	RUN A 100%	RUN A+B 75%	RUN B 50%	無負荷	定格	無負荷	定格	定格	起動	定格	起動	RUN A	RUN A+B	RUN B	起動
OFF	OFF	OFF	OFF	OFF	2.0	2.0									0.4	—	—	—	
OFF	OFF	OFF	OFF	ON	2.7	2.7	2.0	2.0							0.5	0.4	—	—	
OFF	OFF	OFF	ON	OFF	3.4	3.4	2.5	2.5							0.5	0.5	—	—	
OFF	OFF	OFF	ON	ON	4.1	4.1	3.0	3.0	2.0	2.0					0.6	0.5	0.4	—	
OFF	OFF	ON	OFF	OFF	4.8	4.8	3.6	3.6	2.4	2.4					0.7	0.5	0.4	—	
OFF	OFF	ON	OFF	ON	5.5	5.5	4.1	4.1	2.7	2.7					0.7	0.6	0.5	—	
OFF	OFF	ON	ON	OFF	6.2	6.2	4.6	4.6	3.1	3.1					0.8	0.7	0.5	—	
OFF	OFF	ON	ON	ON	6.9	6.9	5.1	5.1	3.4	3.4					0.9	0.7	0.5	—	
OFF	ON	OFF	OFF	OFF	7.6	7.6	5.7	5.7	3.8	3.8					0.9	0.7	0.6	—	
OFF	ON	OFF	OFF	ON	8.3	8.3	6.2	6.2	4.1	4.1					1.0	0.8	0.6	—	
OFF	ON	OFF	ON	OFF	9.0	9.0	6.7	6.7	4.5	4.5					1.1	0.9	0.6	—	
OFF	ON	OFF	ON	ON	9.7	9.7	7.2	7.2	4.8	4.8					1.1	0.9	0.7	—	
OFF	ON	ON	OFF	OFF	10.4	10.4	7.8	7.8	5.2	5.2					1.2	0.9	0.7	—	
OFF	ON	ON	OFF	ON	11.1	11.1	8.3	8.3	5.5	5.5					1.3	1.0	0.7	—	
OFF	ON	ON	ON	OFF	11.8	11.8	8.8	8.8	5.9	5.9					1.3	1.0	0.8	—	
OFF	ON	ON	ON	ON	12.5	12.5	9.3	9.3	6.2	6.2					1.4	1.1	0.8	—	
ON	OFF	OFF	OFF	OFF	13.2	13.2	9.9	9.9	6.6	6.6	118.8	655.7	2.9	16.3	1.5	1.1	0.8	3.0	
ON	OFF	OFF	OFF	ON	13.9	13.9	10.4	10.4	6.9	6.9					1.6	1.2	0.9		
ON	OFF	OFF	ON	OFF	14.6	14.6	10.9	10.9	7.3	7.3					1.6	1.2	0.9		
ON	OFF	OFF	ON	ON	15.3	15.3	11.4	11.4	7.6	7.6					1.7	1.3	0.9		

■ 呼称速度：60

DIP SW					周速				接続力 (N)		トルク (N·m)		電流値 (A)						
SW1	SW2	SW3	SW4	SW5	RUN A 100%	RUN A+B 75%	RUN B 50%	無負荷	定格	無負荷	定格	無負荷	定格	定格	起動	定格	起動	定格	起動
OFF	OFF	OFF	OFF	OFF	8.2	8.2								0.4	—	—			
OFF	OFF	OFF	OFF	ON	11.4	11.4	8.5	8.5						0.5	0.4	—			
OFF	OFF	OFF	ON	OFF	14.3	14.3	10.7	10.7						0.5	0.5	—			
OFF	OFF	OFF	ON	ON	17.1	17.1	12.8	12.8	8.5	8.5				0.6	0.5	0.4			
OFF	OFF	ON	OFF	OFF	20.0	20.0	15.0	15.0	10.0	10.0				0.7	0.5	0.4			
OFF	OFF	ON	OFF	ON	22.8	22.8	17.1	17.1	11.4	11.4				0.7	0.6	0.5			
OFF	OFF	ON	ON	OFF	25.7	25.7	19.2	19.2	12.8	12.8				0.8	0.7	0.5			
OFF	OFF	ON	ON	ON	28.6	28.6	21.4	21.4	14.3	14.3				0.9	0.7	0.5			
OFF	ON	OFF	OFF	OFF	31.4	31.4	23.5	23.5	15.7	15.7				0.9	0.7	0.6			
OFF	ON	OFF	OFF	ON	34.3	34.3	25.7	25.7	17.1	17.1				1.0	0.8	0.6			
OFF	ON	OFF	ON	OFF	37.1	37.1	27.8	27.8	18.5	18.5				1.1	0.9	0.6			
OFF	ON	OFF	ON	ON	40.0	40.0	30.0	30.0	20.0	20.0				1.1	0.9	0.7			
OFF	ON	ON	OFF	OFF	42.9	42.9	32.1	32.1	21.4	21.4				1.2	0.9	0.7			
OFF	ON	ON	OFF	ON	45.7	45.7	34.2	34.2	22.8	22.8				1.3	1.0	0.7			
OFF	ON	ON	ON	OFF	48.6	48.6	36.4	36.4	24.3	24.3				1.3	1.0	0.8			
OFF	ON	ON	ON	ON	51.5	51.5	38.6	38.6	25.7	25.7				1.4	1.1	0.8			
ON	OFF	OFF	OFF	OFF	54.3	54.3	40.7	40.7	27.1	27.1				1.5	1.1	0.8			
ON	OFF	OFF	OFF	ON	57.2	57.2	42.9	42.9	28.6	28.6				1.6	1.2	0.9			
ON	OFF	OFF	ON	OFF	60.0	60.0	45.0	45.0	30.0	30.0				1.6	1.2	0.9			
ON	OFF	OFF	ON	ON	62.9	62.9	47.1	47.1	31.4	31.4				1.7	1.3	0.9			
ON	OFF	ON	OFF	OFF	65.8	65.8	49.3	49.3	32.9	32.9				1.8	1.3	1.0			
ON	OFF	ON	OFF	ON	68.6	68.6	51.4	51.4	34.3	34.3				1.8	1.4	1.0			
ON	OFF	ON	ON	OFF	70.0	70.0	52.5	52.5	35.0	35.0				1.9	1.4	1.0			
ON	OFF	ON	ON	ON	71.5	71.5	53.6	53.6	35.7	35.7				2.0	1.5	1.0			
ON	ON	OFF	OFF	OFF	72.9	72.9	54.6	54.6	36.4	36.4				2.0	1.5	1.0			
ON	ON	OFF	OFF	ON	74.3	74.3	55.7	55.7	37.1	37.1				2.1	1.5	1.1			
ON	ON	OFF	ON	OFF	75.8	75.8	56.8	56.8	37.9	37.9				2.2	1.6	1.1			
ON	ON	OFF	ON	ON	77.2	77.2	57.9	57.9	38.6	38.6				2.2	1.6	1.1			
ON	ON	ON	OFF	OFF	78.6	78.6	58.9	58.9	39.3	39.3				2.3	1.6	1.1			
ON	ON	ON	OFF	ON	80.1	80.1	60.0	60.0	40.0	40.0				2.4	1.6	1.1			
ON	ON	ON	ON	OFF	81.5	81.5	61.1	61.1	40.7	40.7				2.4	1.6	1.1			
ON	ON	ON	ON	ON	82.9	82.9	62.1	62.1	41.4	41.4				2.5	1.7	1.2			

■ 呼称速度：75

DIP SW					周速				接続力 (N)		トルク (N·m)		電流値 (A)						
SW1	SW2	SW3	SW4	SW5	RUN A 100%	RUN A+B 75%	RUN B 50%	無負荷	定格	無負荷	定格	無負荷	定格	定格	起動	定格	起動	定格	起動
OFF	OFF	OFF	OFF	OFF	10.1	10.1								0.4	—	—			
OFF	OFF	OFF	OFF	ON	13.9	13.9	10.4	10.4						0.5	0.4	—			
OFF	OFF	OFF	ON	OFF	17.4	17.4	13.0	13.0						0.5	0.5	—			
OFF	OFF	OFF	ON	ON	20.9	20.9	15.6	15.6	10.4	10.4				0.6	0.5	0.4			
OFF	OFF	ON	OFF	OFF	24.4	24.4	18.3	18.3	12.2	12.2				0.7	0.5	0.4			
OFF	OFF	ON	OFF	ON	27.9	27.9	20.9	20.9	13.9	13.9				0.7	0.6	0.5			
OFF	OFF	ON	ON	OFF	31.4	31.4	23.5	23.5	15.7	15.7				0.8	0.7	0.5			
OFF	OFF	ON	ON	ON	34.9	34.9	26.1	26.1	17.4	17.4				0.9	0.7	0.5			
OFF	ON	OFF	OFF	OFF	38.3	38.3	28.7	28.7	19.1	19.1				0.9	0.7	0.6			
OFF	ON	OFF	OFF	ON	41.8	41.8	31.3	31.3	20.9	20.9				1.0	0.8	0.6			
OFF	ON	OFF	ON	OFF	45.3	45.3	33.9	33.9	22.6	22.6				1.1	0.9	0.6			
OFF	ON	OFF	ON	ON	48.8	48.8	36.6	36.6	24.4	24.4				1.1	0.9	0.7			
OFF	ON	ON	OFF	OFF	52.3	52.3	39.2	39.2	26.1	26.1				1.2	0.9	0.7			
OFF	ON	ON	OFF	ON	55.8	55.8	41.8	41.8	27.9	27.9				1.3	1.0	0.7			
OFF	ON	ON	ON	OFF	59.3	59.3	44.4	44.4	29.6	29.6				1.3	1.0	0.8			
OFF	ON	ON	ON	ON	62.8	62.8	47.1	47.1	31.4	31.4				1.4	1.1	0.8			
ON	OFF	OFF	OFF	OFF	66.3	66.3	49.7	49.7	33.1	33.1				1.5	1.1	0.8			
ON	OFF	OFF	OFF	ON	69.8	69.8	52.3	52.3	34.9	34.9				1.6	1.2	0.9			
ON	OFF	OFF	ON	OFF	73.3	73.3	54.9	54.9	36.6	36.6				1.6	1.2	0.9			
ON	OFF	OFF	ON	ON	76.7	76.7	57.5	57.5	38.3	38.3				1.7	1.3	0.9			
ON	OFF	ON	OFF	OFF	80.2	80.2	60.1	60.1	40.1	40.1				1.8	1.3	1.0			
ON	OFF	ON	OFF	ON	83.7	83.7	62.7	62.7	41.8	41.8				1.8	1.4	1.0			
ON	OFF	ON	ON	OFF	85.5	85.5	64.1	64.1	42.7	42.7				1.9	1.4	1.0			
ON	OFF	ON	ON	ON	87.2	87.2	65.4	65.4	43.6	43.6				2.0	1.5	1.0			
ON	ON	OFF	OFF	OFF	89.0	89.0	66.7	66.7	44.5	44.5				2.0	1.5	1.0			
ON	ON	OFF	OFF	ON	90.7	90.7	68.0	68.0	45.3	45.3				2.1	1.5	1.1			
ON	ON	OFF	ON	OFF	92.5	92.5	69.3	69.3	46.2	46.2				2.2	1.6	1.1			
ON	ON	OFF	ON	ON	94.2	94.2	70.6	70.6	47.1	47.1				2.2	1.6	1.1			
ON	ON	ON	OFF	OFF	95.9	95.9	71.9	71.9	47.9	47.9				2.3	1.6	1.1			
ON	ON	ON	OFF	ON	97.7	97.7	73.2	73.2	48.8	48.8				2.4	1.6	1.1			
ON	ON	ON	ON	OFF	99.4	99.4	74.5	74.5	49.7	49.7				2.4	1.6	1.1			
ON	ON	ON	ON	ON	101.2	101.2	75.9	75.9	50.6	50.6				2.5	1.7	1.2			

■ 呼称速度：95

DIP SW					周速				接続力 (N)		トルク (N·m)		電流値 (A)						
SW1	SW2	SW3	SW4	SW5	RUN A 100%	RUN A+B 75%	RUN B 50%	無負荷	定格	無負荷	定格	無負荷	定格	定格	起動	定格	起動	定格	起動
OFF	OFF	OFF	OFF	OFF	13.3	13.3								0.4	—	—			
OFF	OFF	OFF	OFF	ON	18.4	18.4	13.8	13.8						0.5	0.4	—			
OFF	OFF	OFF	ON	OFF	23.0	23.0	17.2	17.2						0.5	0.5	—			
OFF	OFF	OFF	ON	ON	27.6	27.6	20.7	20.7	13.8	13.8				0.6	0.5	0.4			
OFF	OFF	ON	OFF	OFF	32.2	32.2	24.1	24.1	16.1	16.1				0.7	0.5	0.4			
OFF	OFF	ON	OFF	ON	36.8	36.8	27.6	27.6	18.4	18.4				0.7	0.6	0.5			
OFF	OFF	ON	ON	OFF	41.4	41.4	31.0	31.0	20.7	20.7				0.8	0.7	0.5			
OFF	OFF	ON	ON	ON	46.0	46.0	34.5	34.5	23.0	23.0				0.9	0.7	0.5			
OFF	ON	OFF	OFF	OFF	50.6	50.6	37.9	37.9	25.3	25.3				0.9	0.7	0.6			
OFF	ON	OFF	OFF	ON	55.2	55.2	41.4	41.4	27.6	27.6				1.0	0.8	0.6			
OFF	ON	OFF	ON	OFF	59.9	59.9	44.9	44.9	29.9	29.9				1.1	0.9	0.6			
OFF	ON	OFF	ON	ON	64.5	64.5	48.3	48.3	32.2	32.2				1.1	0.9	0.7			
OFF	ON	ON	OFF	OFF	69.1	69.1	51.8	51.8	34.5	34.5				1.2	0.9	0.7			
OFF	ON	ON	OFF	ON	73.7	73.7	55.2	55.2	36.8	36.8				1.3	1.0	0.7			
OFF	ON	ON	ON	OFF	78.3	78.3	58.7	58.7	39.1	39.1				1.3	1.0	0.8			
OFF	ON	ON	ON	ON	82.9	82.9	62.1	62.1	41.4	41.4				1.4	1.1	0.8			
ON	OFF	OFF	OFF	OFF	87.5	87.5	65.6	65.6	43.7	43.7				1.5	1.1	0.8			
ON	OFF	OFF	OFF	ON	92.1	92.1	69.0	69.0	46.0	46.0				1.6	1.2	0.9			
ON	OFF	OFF	ON	OFF	96.7	96.7	72.5	72.5	48.3	48.3				1.6	1.2	0.9			
ON	OFF	OFF	ON	ON	101.3	101.3	75.9	75.9	50.6	50.6				1.7	1.3	0.9			

# φ57 DCブラシレス SENERGY

パイプ径：φ57  
 肉厚：1.5t  
 電源：DC24V  
 表面処理：ユニクロメッキ  
 リード線色：ブラック



■ 呼称速度：15

DIP SW					周速				接続力 (N)		トルク (N·m)		電流値 (A)				
SW1	SW2	SW3	SW4	SW5	無負荷	100%	RUN A+B 75%	RUN B 50%	定格	起動	定格	起動	RUN A	RUN A+B	RUN B	起	起
OFF	OFF	OFF	OFF	OFF	2.3	2.3							0.4	—	—	—	—
OFF	OFF	OFF	OFF	ON	3.1	3.1	2.3	2.3					0.5	0.4	—	—	—
OFF	OFF	OFF	ON	OFF	3.9	3.9	2.9	2.9					0.5	0.5	—	—	—
OFF	OFF	OFF	ON	ON	4.7	4.7	3.5	3.5	2.3	2.3			0.6	0.5	0.4	—	—
OFF	OFF	ON	OFF	OFF	5.5	5.5	4.1	4.1	2.7	2.7			0.7	0.5	0.4	—	—
OFF	OFF	ON	OFF	ON	6.3	6.3	4.7	4.7	3.1	3.1			0.7	0.6	0.5	—	—
OFF	OFF	ON	ON	OFF	7.1	7.1	5.3	5.3	3.5	3.5			0.8	0.7	0.5	—	—
OFF	OFF	ON	ON	ON	7.9	7.9	5.9	5.9	3.9	3.9			0.9	0.7	0.5	—	—
OFF	ON	OFF	OFF	OFF	8.7	8.7	6.5	6.5	4.3	4.3			0.9	0.7	0.6	—	—
OFF	ON	OFF	OFF	ON	9.5	9.5	7.1	7.1	4.7	4.7			1.0	0.8	0.6	—	—
OFF	ON	OFF	ON	OFF	10.3	10.3	7.7	7.7	5.1	5.1			1.1	0.9	0.6	—	—
OFF	ON	OFF	ON	ON	11.1	11.1	8.3	8.3	5.5	5.5			1.1	0.9	0.7	—	—
OFF	ON	ON	OFF	OFF	11.9	11.9	8.9	8.9	5.9	5.9			1.2	0.9	0.7	—	—
OFF	ON	ON	OFF	ON	12.7	12.7	9.5	9.5	6.3	6.3			1.3	1.0	0.7	—	—
OFF	ON	ON	ON	OFF	13.5	13.5	10.1	10.1	6.7	6.7			1.3	1.0	0.8	—	—
OFF	ON	ON	ON	ON	14.3	14.3	10.7	10.7	7.1	7.1			1.4	1.1	0.8	—	—
ON	OFF	OFF	OFF	OFF	15.1	15.1	11.3	11.3	7.5	7.5	104.2	575.2	1.5	1.1	0.8	—	—
ON	OFF	OFF	OFF	ON	15.9	15.9	11.9	11.9	7.9	7.9	2.9	16.3	1.6	1.2	0.9	—	—
ON	OFF	OFF	ON	OFF	16.7	16.7	12.5	12.5	8.3	8.3			1.6	1.2	0.9	—	—
ON	OFF	OFF	ON	ON	17.5	17.5	13.1	13.1	8.7	8.7			1.7	1.3	0.9	—	—
ON	OFF	ON	OFF	OFF	18.3	18.3	13.7	13.7	9.1	9.1			1.8	1.3	1.0	—	—
ON	OFF	ON	OFF	ON	19.1	19.1	14.3	14.3	9.5	9.5			1.8	1.4	1.0	—	—
ON	OFF	ON	ON	OFF	19.4	19.4	14.5	14.5	9.7	9.7			1.9	1.4	1.0	—	—
ON	OFF	ON	ON	ON	19.8	19.8	14.8	14.8	9.9	9.9			2.0	1.5	1.0	—	—
ON	ON	OFF	OFF	OFF	20.2	20.2	15.1	15.1	10.1	10.1			2.0	1.5	1.0	—	—
ON	ON	OFF	OFF	ON	20.6	20.6	15.4	15.4	10.3	10.3			2.1	1.5	1.1	—	—
ON	ON	OFF	ON	OFF	21.0	21.0	15.7	15.7	10.5	10.5			2.2	1.6	1.1	—	—
ON	ON	OFF	ON	ON	21.4	21.4	16.0	16.0	10.7	10.7			2.2	1.6	1.1	—	—
ON	ON	ON	OFF	OFF	21.8	21.8	16.3	16.3	10.9	10.9			2.3	1.6	1.1	—	—
ON	ON	ON	OFF	ON	22.2	22.2	16.6	16.6	11.1	11.1			2.4	1.6	1.1	—	—
ON	ON	ON	ON	OFF	22.6	22.6	16.9	16.9	11.3	11.3			2.4	1.6	1.1	—	—
ON	ON	ON	ON	ON	23.0	23.0	17.2	17.2	11.5	11.5			2.5	1.7	1.2	—	—

■ 呼称速度：20

DIP SW					周速				接続力 (N)		トルク (N·m)		電流値 (A)				
SW1	SW2	SW3	SW4	SW5	無負荷	100%	RUN A+B 75%	RUN B 50%	定格	起動	定格	起動	RUN A	RUN A+B	RUN B	起	起
OFF	OFF	OFF	OFF	OFF	3.1	3.1							0.4	—	—	—	—
OFF	OFF	OFF	OFF	ON	4.3	4.3	3.2	3.2					0.5	0.4	—	—	—
OFF	OFF	OFF	ON	OFF	5.4	5.4	4.0	4.0					0.5	0.5	—	—	—
OFF	OFF	OFF	ON	ON	6.5	6.5	4.8	4.8	3.2	3.2			0.6	0.5	0.4	—	—
OFF	OFF	ON	OFF	OFF	7.6	7.6	5.7	5.7	3.8	3.8			0.7	0.5	0.4	—	—
OFF	OFF	ON	OFF	ON	8.6	8.6	6.4	6.4	4.3	4.3			0.7	0.6	0.5	—	—
OFF	OFF	ON	ON	OFF	9.7	9.7	7.2	7.2	4.8	4.8			0.8	0.7	0.5	—	—
OFF	OFF	ON	ON	ON	10.8	10.8	8.1	8.1	5.4	5.4			0.9	0.7	0.5	—	—
OFF	ON	OFF	OFF	OFF	11.9	11.9	8.9	8.9	5.9	5.9			0.9	0.7	0.6	—	—
OFF	ON	OFF	OFF	ON	13.0	13.0	9.7	9.7	6.5	6.5			1.0	0.8	0.6	—	—
OFF	ON	OFF	ON	OFF	14.1	14.1	10.5	10.5	7.0	7.0			1.1	0.9	0.6	—	—
OFF	ON	OFF	ON	ON	15.2	15.2	11.4	11.4	7.6	7.6			1.1	0.9	0.7	—	—
OFF	ON	ON	OFF	OFF	16.3	16.3	12.2	12.2	8.1	8.1			1.2	0.9	0.7	—	—
OFF	ON	ON	OFF	ON	17.3	17.3	12.9	12.9	8.6	8.6			1.3	1.0	0.7	—	—
OFF	ON	ON	ON	OFF	18.4	18.4	13.8	13.8	9.2	9.2			1.3	1.0	0.8	—	—
OFF	ON	ON	ON	ON	19.5	19.5	14.6	14.6	9.7	9.7			1.4	1.1	0.8	—	—
ON	OFF	OFF	OFF	OFF	20.6	20.6	15.4	15.4	10.3	10.3	76.2	421.0	1.5	1.1	0.8	—	—
ON	OFF	OFF	OFF	ON	21.7	21.7	16.2	16.2	10.8	10.8	2.1	12.0	1.6	1.2	0.9	—	—
ON	OFF	OFF	ON	OFF	22.8	22.8	17.1	17.1	11.4	11.4			1.6	1.2	0.9	—	—
ON	OFF	OFF	ON	ON	23.9	23.9	17.9	17.9	11.9	11.9			1.7	1.3	0.9	—	—
ON	OFF	ON	OFF	OFF	25.0	25.0	18.7	18.7	12.5	12.5			1.8	1.3	1.0	—	—
ON	OFF	ON	OFF	ON	26.0	26.0	19.5	19.5	13.0	13.0			1.8	1.4	1.0	—	—
ON	OFF	ON	ON	OFF	26.6	26.6	19.9	19.9	13.3	13.3			1.9	1.4	1.0	—	—
ON	OFF	ON	ON	ON	27.1	27.1	20.3	20.3	13.5	13.5			2.0	1.5	1.0	—	—
ON	ON	OFF	OFF	OFF	27.7	27.7	20.7	20.7	13.8	13.8			2.0	1.5	1.0	—	—
ON	ON	OFF	OFF	ON	28.2	28.2	21.1	21.1	14.1	14.1			2.1	1.5	1.1	—	—
ON	ON	OFF	ON	OFF	28.8	28.8	21.6	21.6	14.4	14.4			2.2	1.6	1.1	—	—
ON	ON	OFF	ON	ON	29.3	29.3	21.9	21.9	14.6	14.6			2.2	1.6	1.1	—	—
ON	ON	ON	OFF	OFF	29.8	29.8	22.3	22.3	14.9	14.9			2.3	1.6	1.1	—	—
ON	ON	ON	OFF	ON	30.4	30.4	22.8	22.8	15.2	15.2			2.4	1.6	1.1	—	—
ON	ON	ON	ON	OFF	30.9	30.9	23.1	23.1	15.4	15.4			2.4	1.6	1.1	—	—
ON	ON	ON	ON	ON	31.5	31.5	23.6	23.6	15.7	15.7			2.5	1.7	1.2	—	—

■ 呼称速度：25

DIP SW					周速				接続力 (N)		トルク (N·m)		電流値 (A)				
SW1	SW2	SW3	SW4	SW5	無負荷	100%	RUN A+B 75%	RUN B 50%	定格	起動	定格	起動	RUN A	RUN A+B	RUN B	起	起
OFF	OFF	OFF	OFF	OFF	3.8	3.8							0.4	—	—	—	—
OFF	OFF	OFF	OFF	ON	5.3	5.3	3.9	3.9					0.5	0.4	—	—	—
OFF	OFF	OFF	ON	OFF	6.6	6.6	4.9	4.9					0.5	0.5	—	—	—
OFF	OFF	OFF	ON	ON	7.9	7.9	5.9	5.9	3.9	3.9			0.6	0.5	0.4	—	—
OFF	OFF	ON	OFF	OFF	9.2	9.2	6.9	6.9	4.6	4.6			0.7	0.5	0.4	—	—
OFF	OFF	ON	OFF	ON	10.6	10.6	7.9	7.9	5.3	5.3			0.7	0.6	0.5	—	—
OFF	OFF	ON	ON	OFF	11.9	11.9	8.9	8.9	5.9	5.9			0.8	0.7	0.5	—	—
OFF	OFF	ON	ON	ON	13.2	13.2	9.9	9.9	6.6	6.6			0.9	0.7	0.5	—	—
OFF	ON	OFF	OFF	OFF	14.5	14.5	10.8	10.8	7.2	7.2			0.9	0.7	0.6	—	—
OFF	ON	OFF	OFF	ON	15.9	15.9	11.9	11.9	7.9	7.9			1.0	0.8	0.6	—	—
OFF	ON	OFF	ON	OFF	17.2	17.2	12.9	12.9	8.6	8.6			1.1	0.9	0.6	—	—
OFF	ON	OFF	ON	ON	18.5	18.5	13.8	13.8	9.2	9.2			1.1	0.9	0.7	—	—
OFF	ON	ON	OFF	OFF	19.8	19.8	14.8	14.8	9.9	9.9			1.2	0.9	0.7	—	—
OFF	ON	ON	OFF	ON	21.2	21.2	15.9	15.9	10.6	10.6			1.3	1.0	0.7	—	—
OFF	ON	ON	ON	OFF	22.5	22.5	16.8	16.8	11.2	11.2			1.3	1.0	0.8	—	—
OFF	ON	ON	ON	ON	23.8	23.8	17.8	17.8	11.9	11.9			1.4	1.1	0.8	—	—
ON	OFF	OFF	OFF	OFF	25.2	25.2	18.9	18.9	12.6	12.6	62.5	345.1	1.5	1.1	0.8	—	—
ON	OFF	OFF	OFF	ON	26.5	26.5	19.8	19.8	13.2	13.2	1.7	9.8	1.6	1.2	0.9	—	—
ON	OFF	OFF	ON	OFF	27.8	27.8	20.8	20.8	13.9	13.9			1.6	1.2	0.9	—	—
ON	OFF	OFF	ON	ON	29.1	29.1	21.8	21.8	14.5	14.5			1.7	1.3	0.9	—	—
ON	OFF	ON	OFF	OFF	30.5	30.5	22.8	22.8	15.2	15.2			1.8	1.3	1.0	—	—
ON	OFF	ON	OFF	ON	31												

● 呼称速度：60

DIP SW					周速				接続力(N)		トルク(N・m)		電流値(A)			
SW1	SW2	SW3	SW4	SW5	RUN A 100%	RUN A+B 75%	RUN B 50%		定格	起動	定格	起動	RUN A	RUN A+B	RUN B	起動
無負荷	定格	無負荷	定格	無負荷	定格	無負荷	定格									
OFF	OFF	OFF	OFF	OFF	9.4	9.4						0.4	—	—		
OFF	OFF	OFF	OFF	ON	13.0	13.0	9.7	9.7				0.5	0.4	—		
OFF	OFF	OFF	ON	OFF	16.3	16.3	12.2	12.2				0.5	0.5	—		
OFF	OFF	OFF	ON	ON	19.5	19.5	14.6	14.6				0.6	0.5	0.4		
OFF	OFF	ON	OFF	OFF	22.8	22.8	17.1	17.1	11.4	11.4		0.7	0.5	0.4		
OFF	OFF	ON	OFF	ON	26.0	26.0	19.5	19.5	13.0	13.0		0.7	0.6	0.5		
OFF	OFF	ON	ON	OFF	29.3	29.3	21.9	21.9	14.6	14.6		0.8	0.7	0.5		
OFF	OFF	ON	ON	ON	32.6	32.6	24.4	24.4	16.3	16.3		0.9	0.7	0.5		
OFF	ON	OFF	OFF	OFF	35.8	35.8	26.8	26.8	17.9	17.9		0.9	0.7	0.6		
OFF	ON	OFF	OFF	ON	39.1	39.1	29.3	29.3	19.5	19.5		1.0	0.8	0.6		
OFF	ON	OFF	ON	OFF	42.4	42.4	31.8	31.8	21.2	21.2		1.1	0.9	0.6		
OFF	ON	OFF	ON	ON	45.6	45.6	34.2	34.2	22.8	22.8		1.1	0.9	0.7		
OFF	ON	ON	OFF	OFF	48.9	48.9	36.6	36.6	24.4	24.4		1.2	0.9	0.7		
OFF	ON	ON	OFF	ON	52.1	52.1	39.0	39.0	26.0	26.0		1.3	1.0	0.7		
OFF	ON	ON	ON	OFF	55.4	55.4	41.5	41.5	27.7	27.7		1.3	1.0	0.8		
OFF	ON	ON	ON	ON	58.7	58.7	44.0	44.0	29.3	29.3		1.4	1.1	0.8		
ON	OFF	OFF	OFF	OFF	61.9	61.9	46.4	46.4	30.9	30.9	25.4	140.3	0.7	4.0	3.0	
ON	OFF	OFF	OFF	ON	65.2	65.2	48.9	48.9	32.6	32.6						
ON	OFF	OFF	ON	OFF	68.4	68.4	51.3	51.3	34.2	34.2						
ON	OFF	OFF	ON	ON	71.7	71.7	53.7	53.7	35.8	35.8						
ON	OFF	ON	OFF	OFF	75.0	75.0	56.2	56.2	37.5	37.5						
ON	OFF	ON	OFF	ON	78.2	78.2	58.6	58.6	39.1	39.1						
ON	OFF	ON	ON	OFF	79.9	79.9	59.9	59.9	39.9	39.9						
ON	OFF	ON	ON	ON	81.5	81.5	61.1	61.1	40.7	40.7						
ON	ON	OFF	OFF	OFF	83.1	83.1	62.3	62.3	41.5	41.5						
ON	ON	OFF	OFF	ON	84.8	84.8	63.6	63.6	42.4	42.4						
ON	ON	OFF	ON	OFF	86.4	86.4	64.8	64.8	43.2	43.2						
ON	ON	OFF	ON	ON	88.0	88.0	66.0	66.0	44.0	44.0						
ON	ON	ON	OFF	OFF	89.6	89.6	67.2	67.2	44.8	44.8						
ON	ON	ON	OFF	ON	91.3	91.3	68.4	68.4	45.6	45.6						
ON	ON	ON	ON	OFF	92.9	92.9	69.6	69.6	46.4	46.4						
ON	ON	ON	ON	ON	94.5	94.5	70.8	70.8	47.2	47.2						

● 呼称速度：75

DIP SW					周速				接続力(N)		トルク(N・m)		電流値(A)			
SW1	SW2	SW3	SW4	SW5	RUN A 100%	RUN A+B 75%	RUN B 50%		定格	起動	定格	起動	RUN A	RUN A+B	RUN B	起動
無負荷	定格	無負荷	定格	無負荷	定格	無負荷	定格									
OFF	OFF	OFF	OFF	OFF	11.5	11.5						0.4	—	—		
OFF	OFF	OFF	OFF	ON	15.9	15.9	11.9	11.9				0.5	0.4	—		
OFF	OFF	OFF	ON	OFF	19.8	19.8	14.8	14.8				0.5	0.5	—		
OFF	OFF	OFF	ON	ON	23.8	23.8	17.8	17.8	11.9	11.9		0.6	0.5	0.4		
OFF	OFF	ON	OFF	OFF	27.8	27.8	20.8	20.8	13.9	13.9		0.7	0.5	0.4		
OFF	OFF	ON	OFF	ON	31.8	31.8	23.8	23.8	15.9	15.9		0.7	0.6	0.5		
OFF	OFF	ON	ON	OFF	35.8	35.8	26.8	26.8	17.9	17.9		0.8	0.7	0.5		
OFF	OFF	ON	ON	ON	39.7	39.7	29.7	29.7	19.8	19.8		0.9	0.7	0.5		
OFF	ON	OFF	OFF	OFF	43.7	43.7	32.7	32.7	21.8	21.8		0.9	0.7	0.6		
OFF	ON	OFF	OFF	ON	47.7	47.7	35.7	35.7	23.8	23.8		1.0	0.8	0.6		
OFF	ON	OFF	ON	OFF	51.7	51.7	38.7	38.7	25.8	25.8	20.8	115.0	0.5	3.2	3.0	
OFF	ON	OFF	ON	ON	55.7	55.7	41.7	41.7	27.8	27.8						
OFF	ON	ON	OFF	OFF	59.6	59.6	44.7	44.7	29.8	29.8						
OFF	ON	ON	OFF	ON	63.6	63.6	47.7	47.7	31.8	31.8						
OFF	ON	ON	ON	OFF	67.6	67.6	50.7	50.7	33.8	33.8						
OFF	ON	ON	ON	ON	71.6	71.6	53.7	53.7	35.8	35.8						
ON	OFF	OFF	OFF	OFF	75.6	75.6	56.7	56.7	37.8	37.8						
ON	OFF	OFF	OFF	ON	79.5	79.5	59.6	59.6	39.7	39.7						
ON	OFF	OFF	ON	OFF	83.5	83.5	62.6	62.6	41.7	41.7						
ON	OFF	OFF	ON	ON	87.5	87.5	65.6	65.6	43.7	43.7						
ON	OFF	ON	OFF	OFF	91.5	91.5	68.6	68.6	45.7	45.7						
ON	OFF	ON	OFF	ON	95.5	95.5	71.6	71.6	47.7	47.7						
ON	OFF	ON	ON	OFF	99.4	99.4	74.5	74.5	49.7	49.7						
ON	OFF	ON	ON	ON	103.4	103.4	77.5	77.5	51.7	51.7						
ON	ON	OFF	OFF	OFF	107.4	107.4	80.5	80.5	53.7	53.7						
ON	ON	OFF	OFF	ON	111.4	111.4	83.5	83.5	55.7	55.7						
ON	ON	OFF	ON	OFF	115.4	115.4	86.5	86.5	57.7	57.7						
ON	ON	OFF	ON	ON	119.4	119.4	89.5	89.5	59.7	59.7						
ON	ON	ON	OFF	OFF	123.4	123.4	92.5	92.5	61.7	61.7						
ON	ON	ON	OFF	ON	127.4	127.4	95.5	95.5	63.7	63.7						
ON	ON	ON	ON	OFF	131.4	131.4	98.5	98.5	65.7	65.7						
ON	ON	ON	ON	ON	135.4	135.4	101.5	101.5	67.7	67.7						

● 呼称速度：95

DIP SW					周速				接続力(N)		トルク(N・m)		電流値(A)			
SW1	SW2	SW3	SW4	SW5	RUN A 100%	RUN A+B 75%	RUN B 50%		定格	起動	定格	起動	RUN A	RUN A+B	RUN B	起動
無負荷	定格	無負荷	定格	無負荷	定格	無負荷	定格									
OFF	OFF	OFF	OFF	OFF	15.2	15.2						0.4	—	—		
OFF	OFF	OFF	OFF	ON	21.0	21.0	15.7	15.7				0.5	0.4	—		
OFF	OFF	OFF	ON	OFF	26.2	26.2	19.6	19.6				0.5	0.5	—		
OFF	OFF	OFF	ON	ON	31.5	31.5	23.6	23.6	15.7	15.7		0.6	0.5	0.4		
OFF	OFF	ON	OFF	OFF	36.7	36.7	27.5	27.5	18.3	18.3		0.7	0.5	0.4		
OFF	OFF	ON	OFF	ON	42.0	42.0	31.5	31.5	21.0	21.0		0.7	0.6	0.5		
OFF	OFF	ON	ON	OFF	47.2	47.2	35.4	35.4	23.6	23.6		0.8	0.7	0.5		
OFF	OFF	ON	ON	ON	52.5	52.5	39.3	39.3	26.2	26.2		0.9	0.7	0.5		
OFF	ON	OFF	OFF	OFF	57.7	57.7	43.2	43.2	28.8	28.8		0.9	0.7	0.6		
OFF	ON	OFF	OFF	ON	63.0	63.0	47.2	47.2	31.5	31.5		1.0	0.8	0.6		
OFF	ON	OFF	ON	OFF	68.2	68.2	51.1	51.1	34.1	34.1		1.1	0.9	0.6		
OFF	ON	OFF	ON	ON	73.5	73.5	55.1	55.1	36.7	36.7		1.1	0.9	0.7		
OFF	ON	ON	OFF	OFF	78.7	78.7	59.0	59.0	39.3	39.3		1.2	0.9	0.7		
OFF	ON	ON	OFF	ON	84.0	84.0	63.0	63.0	42.0	42.0		1.3	1.0	0.7		
OFF	ON	ON	ON	OFF	89.2	89.2	66.9	66.9	44.6	44.6		1.3	1.0	0.8		
OFF	ON	ON	ON	ON	94.5	94.5	70.8	70.8	47.2	47.2		1.4	1.1	0.8		
ON	OFF	OFF	OFF	OFF	99.8	99.8	74.8	74.8	49.9	49.9	15.7	87.1	0.4	2.4	3.0	
ON	OFF	OFF	OFF	ON	105.0	105.0	78.7	78.7	52.5	52.5						
ON	OFF	OFF	ON	OFF	110.3	110.3	82.7	82.7	55.1	55.1						
ON	OFF	OFF	ON	ON	115.5	115.5	86.6	86.6	57.7	57.7						
ON	OFF	ON	OFF	OFF	120.8	120.8	90.6	90.6	60.4	60.4						
ON	OFF	ON	OFF	ON	126.0	126.0	94.5	94.5	63.0	63.0						
ON	OFF	ON	ON	OFF	128.6	128.6	96.4	96.4	64.3	64.3						
ON	OFF	ON	ON	ON	131.3	131.3	98.4	98.4	65.6	65.6						
ON	ON	OFF	OFF	OFF	133.9	133.9	100.4	100.4	66.9	66.9						
ON	ON	OFF	OFF	ON	136.5	136.5	102.3	102.3	68.2	68.2						
ON	ON	OFF	ON	OFF	139.2	139.2	104.4	104.4	69.6	69.6						
ON	ON	OFF	ON	ON	141.8	141.8	106.3	106.3	70.9	70.9						
ON	ON	ON	OFF	OFF	144.4	144.4	108.3	108.3	72.2	72.2						
ON	ON	ON	OFF	ON	147.0	147.0	110.2	110.2	73.5	73.5						
ON	ON	ON	ON	OFF	149.7	149.7	112.2	112.2	74.8	74.8						
ON	ON	ON	ON	ON	152.3	152.3	114.2	114.2	76.1	76.1						

● 呼称速度：125

DIP SW					周速				接続力(N)		トルク(N・m)		電流値(A)			
SW1	SW2	SW3	SW4	SW5	RUN A 100%	RUN A+B 75%	RUN B 50%									

# φ60.5 DCブラシレス SENERGY

パイプ径: φ60.5  
 肉厚: 3.25t  
 電源: DC24V  
 表面処理: ユニクロメッキ  
 リード線色: ブラック



■ 呼称速度: 15

DIP SW					周速				接続力 (N)		トルク (N-m)		電流値 (A)					
SW1	SW2	SW3	SW4	SW5	無負荷	100%	RUN A+B 75%	RUN B 50%	定格	起動	定格	起動	RUN A	RUN A+B	RUN B	起動		
OFF	OFF	OFF	OFF	OFF	2.4	2.4										0.4		
OFF	OFF	OFF	OFF	ON	3.3	3.3	2.4	2.4								0.5	0.4	
OFF	OFF	OFF	ON	OFF	4.2	4.2	3.1	3.1								0.5	0.5	
OFF	OFF	OFF	ON	ON	5.0	5.0	3.7	3.7	2.5	2.5						0.6	0.5	0.4
OFF	OFF	ON	OFF	OFF	5.9	5.9	4.4	4.4	2.9	2.9						0.7	0.5	0.4
OFF	OFF	ON	OFF	ON	6.7	6.7	5.0	5.0	3.3	3.3						0.7	0.6	0.5
OFF	OFF	ON	ON	OFF	7.6	7.6	5.7	5.7	3.8	3.8						0.8	0.7	0.5
OFF	OFF	ON	ON	ON	8.4	8.4	6.3	6.3	4.2	4.2						0.9	0.7	0.5
OFF	ON	OFF	OFF	OFF	9.2	9.2	6.9	6.9	4.6	4.6						0.9	0.7	0.6
OFF	ON	OFF	OFF	ON	10.1	10.1	7.5	7.5	5.0	5.0						1.0	0.8	0.6
OFF	ON	OFF	ON	OFF	10.9	10.9	8.1	8.1	5.4	5.4						1.1	0.9	0.6
OFF	ON	OFF	ON	ON	11.8	11.8	8.8	8.8	5.9	5.9						1.1	0.9	0.7
OFF	ON	ON	OFF	OFF	12.6	12.6	9.4	9.4	6.3	6.3						1.2	0.9	0.7
OFF	ON	ON	OFF	ON	13.5	13.5	10.1	10.1	6.7	6.7						1.3	1.0	0.7
OFF	ON	ON	ON	OFF	14.3	14.3	10.7	10.7	7.1	7.1						1.3	1.0	0.8
OFF	ON	ON	ON	ON	15.2	15.2	11.4	11.4	7.6	7.6						1.4	1.1	0.8
ON	OFF	OFF	OFF	OFF	16.0	16.0	12.0	12.0	8.0	8.0	98.1	541.9	2.9	16.3		1.5	1.1	0.8
ON	OFF	OFF	OFF	ON	16.8	16.8	12.6	12.6	8.4	8.4						1.6	1.2	0.9
ON	OFF	OFF	ON	OFF	17.7	17.7	13.2	13.2	8.8	8.8						1.6	1.2	0.9
ON	OFF	OFF	ON	ON	18.5	18.5	13.8	13.8	9.2	9.2						1.7	1.3	0.9
ON	OFF	ON	OFF	OFF	19.4	19.4	14.5	14.5	9.7	9.7						1.8	1.3	1.0
ON	OFF	ON	OFF	ON	20.2	20.2	15.1	15.1	10.1	10.1						1.8	1.4	1.0
ON	OFF	ON	ON	OFF	20.6	20.6	15.4	15.4	10.3	10.3						1.9	1.4	1.0
ON	OFF	ON	ON	ON	21.1	21.1	15.8	15.8	10.5	10.5						2.0	1.5	1.0
ON	ON	OFF	OFF	OFF	21.5	21.5	16.1	16.1	10.7	10.7						2.0	1.5	1.0
ON	ON	OFF	OFF	ON	21.9	21.9	16.4	16.4	10.9	10.9						2.1	1.5	1.1
ON	ON	OFF	ON	OFF	22.3	22.3	16.7	16.7	11.1	11.1						2.2	1.6	1.1
ON	ON	OFF	ON	ON	22.8	22.8	17.1	17.1	11.4	11.4						2.2	1.6	1.1
ON	ON	ON	OFF	OFF	23.2	23.2	17.4	17.4	11.6	11.6						2.3	1.6	1.1
ON	ON	ON	OFF	ON	23.6	23.6	17.7	17.7	11.8	11.8						2.4	1.6	1.1
ON	ON	ON	ON	OFF	24.0	24.0	18.0	18.0	12.0	12.0						2.4	1.6	1.1
ON	ON	ON	ON	ON	24.4	24.4	18.3	18.3	12.2	12.2						2.5	1.7	1.2

■ 呼称速度: 20

DIP SW					周速				接続力 (N)		トルク (N-m)		電流値 (A)					
SW1	SW2	SW3	SW4	SW5	無負荷	100%	RUN A+B 75%	RUN B 50%	定格	起動	定格	起動	RUN A	RUN A+B	RUN B	起動		
OFF	OFF	OFF	OFF	OFF	3.3	3.3										0.4	—	
OFF	OFF	OFF	OFF	ON	4.6	4.6	3.4	3.4								0.5	0.4	
OFF	OFF	OFF	ON	OFF	5.7	5.7	4.2	4.2								0.5	0.5	
OFF	OFF	OFF	ON	ON	6.9	6.9	5.1	5.1	3.4	3.4						0.6	0.5	0.4
OFF	OFF	ON	OFF	OFF	8.0	8.0	6.0	6.0	4.0	4.0						0.7	0.5	0.4
OFF	OFF	ON	OFF	ON	9.2	9.2	6.9	6.9	4.6	4.6						0.7	0.6	0.5
OFF	OFF	ON	ON	OFF	10.3	10.3	7.7	7.7	5.1	5.1						0.8	0.7	0.5
OFF	OFF	ON	ON	ON	11.5	11.5	8.6	8.6	5.7	5.7						0.9	0.7	0.5
OFF	ON	OFF	OFF	OFF	12.6	12.6	9.4	9.4	6.3	6.3						0.9	0.7	0.6
OFF	ON	OFF	OFF	ON	13.8	13.8	10.3	10.3	6.9	6.9						1.0	0.8	0.6
OFF	ON	OFF	ON	OFF	15.0	15.0	11.2	11.2	7.5	7.5						1.1	0.9	0.6
OFF	ON	OFF	ON	ON	16.1	16.1	12.0	12.0	8.0	8.0						1.1	0.9	0.7
OFF	ON	ON	OFF	OFF	17.3	17.3	12.9	12.9	8.6	8.6						1.2	0.9	0.7
OFF	ON	ON	OFF	ON	18.4	18.4	13.8	13.8	9.2	9.2						1.3	1.0	0.7
OFF	ON	ON	ON	OFF	19.6	19.6	14.7	14.7	9.8	9.8						1.3	1.0	0.8
OFF	ON	ON	ON	ON	20.7	20.7	15.5	15.5	10.3	10.3	71.8	396.6	2.1	12.0		1.4	1.1	0.8
ON	OFF	OFF	OFF	OFF	21.9	21.9	16.4	16.4	10.9	10.9						1.5	1.1	0.8
ON	OFF	OFF	OFF	ON	23.0	23.0	17.2	17.2	11.5	11.5						1.6	1.2	0.9
ON	OFF	OFF	ON	OFF	24.2	24.2	18.1	18.1	12.1	12.1						1.6	1.2	0.9
ON	OFF	OFF	ON	ON	25.3	25.3	18.9	18.9	12.6	12.6						1.7	1.3	0.9
ON	OFF	ON	OFF	OFF	26.5	26.5	19.8	19.8	13.2	13.2						1.8	1.3	1.0
ON	OFF	ON	OFF	ON	27.6	27.6	20.7	20.7	13.8	13.8						1.8	1.4	1.0
ON	OFF	ON	ON	OFF	28.2	28.2	21.1	21.1	14.1	14.1						1.9	1.4	1.0
ON	OFF	ON	ON	ON	28.8	28.8	21.6	21.6	14.4	14.4						2.0	1.5	1.0
ON	ON	OFF	OFF	OFF	29.4	29.4	22.0	22.0	14.7	14.7						2.0	1.5	1.0
ON	ON	OFF	OFF	ON	30.0	30.0	22.5	22.5	15.0	15.0						2.1	1.5	1.1
ON	ON	OFF	ON	OFF	30.5	30.5	22.8	22.8	15.2	15.2						2.2	1.6	1.1
ON	ON	OFF	ON	ON	31.1	31.1	23.3	23.3	15.5	15.5						2.2	1.6	1.1
ON	ON	ON	OFF	OFF	31.7	31.7	23.7	23.7	15.8	15.8						2.3	1.6	1.1
ON	ON	ON	OFF	ON	32.3	32.3	24.2	24.2	16.1	16.1						2.4	1.6	1.1
ON	ON	ON	ON	OFF	32.8	32.8	24.6	24.6	16.4	16.4						2.4	1.6	1.1
ON	ON	ON	ON	ON	33.4	33.4	25.0	25.0	16.7	16.7						2.5	1.7	1.2

■ 呼称速度: 35

DIP SW					周速				接続力 (N)		トルク (N-m)		電流値 (A)					
SW1	SW2	SW3	SW4	SW5	無負荷	100%	RUN A+B 75%	RUN B 50%	定格	起動	定格	起動	RUN A	RUN A+B	RUN B	起動		
OFF	OFF	OFF	OFF	OFF	6.0	6.0										0.4	—	
OFF	OFF	OFF	OFF	ON	8.3	8.3	6.2	6.2								0.5	0.4	
OFF	OFF	OFF	ON	OFF	10.3	10.3	7.7	7.7								0.5	0.5	
OFF	OFF	OFF	ON	ON	12.4	12.4	9.3	9.3	6.2	6.2						0.6	0.5	0.4
OFF	OFF	ON	OFF	OFF	14.5	14.5	10.8	10.8	7.2	7.2						0.7	0.5	0.4
OFF	OFF	ON	OFF	ON	16.6	16.6	12.4	12.4	8.3	8.3						0.7	0.6	0.5
OFF	OFF	ON	ON	OFF	18.6	18.6	13.9	13.9	9.3	9.3						0.8	0.7	0.5
OFF	OFF	ON	ON	ON	20.7	20.7	15.5	15.5	10.3	10.3						0.9	0.7	0.5
OFF	ON	OFF	OFF	OFF	22.8	22.8	17.1	17.1	11.4	11.4						0.9	0.7	0.6
OFF	ON	OFF	OFF	ON	24.9	24.9	18.6	18.6	12.4	12.4						1.0	0.8	0.6
OFF	ON	OFF	ON	OFF	27.0	27.0	20.2	20.2	13.5	13.5						1.1	0.9	0.6
OFF	ON	OFF	ON	ON	29.0	29.0	21.7	21.7	14.5	14.5						1.1	0.9	0.7
OFF	ON	ON	OFF	OFF	31.1	31.1	23.3	23.3	15.5	15.5						1.2	0.9	0.7
OFF	ON	ON	OFF	ON	33.2	33.2	24.9	24.9	16.6	16.6						1.3	1.0	0.7
OFF	ON	ON	ON	OFF	35.3	35.3	26.4	26.4	17.6	17.6						1.3	1.0	0.8
OFF	ON	ON	ON	ON	37.3	37.3	27.9	27.9	18.6	18.6						1.4	1.1	0.8
ON	OFF	OFF	OFF	OFF	39.4	39.4	29.5	29.5	19.7	19.7						1.5	1.1	0.8
ON	OFF	OFF	OFF	ON	41.5	41.5	31.1	31.1	20.7	20.7						1.6	1.2	0.9
ON	OFF	OFF	ON	OFF	43.6	43.6	32.7	32.7	21.8	21.8						1.6	1.2	0.9
ON	OFF	OFF	ON	ON	45.6	45.6	34.2	34.2	22.8	22.8						1.7	1.3	0.9
ON	OFF	ON	OFF	OFF	47.7	47.7	35.7	35.7	23.8	23.8						1.8	1.3	1.0
ON	OFF	ON	OFF	ON	49.8	49.8	37.3	37.3	24.9	24.9		</						

■ 呼称速度：60

DIP SW					周速				接続力 (N)		トルク (N・m)		電流値 (A)			
SW1	SW2	SW3	SW4	SW5	RUN A 100%	RUN A+B 75%	RUN B 50%		定格	起動	定格	起動	RUN A	RUN A+B	RUN B	起動
無負荷	定格	無負荷	定格	無負荷	定格	無負荷	定格									
OFF	OFF	OFF	OFF	OFF	10.0	10.0						0.4	—	—	—	
OFF	OFF	OFF	OFF	ON	13.8	13.8	10.3	10.3				0.5	0.4	—	—	
OFF	OFF	OFF	ON	OFF	17.3	17.3	12.9	12.9				0.5	0.5	—	—	
OFF	OFF	OFF	ON	ON	20.7	20.7	15.5	15.5	10.3	10.3		0.6	0.5	0.4	—	
OFF	OFF	ON	OFF	OFF	24.2	24.2	18.1	18.1	12.1	12.1		0.7	0.5	0.4	—	
OFF	OFF	ON	OFF	ON	27.6	27.6	20.7	20.7	13.8	13.8		0.7	0.6	0.5	—	
OFF	OFF	ON	ON	OFF	31.1	31.1	23.3	23.3	15.5	15.5		0.8	0.7	0.5	—	
OFF	OFF	ON	ON	ON	34.6	34.6	25.9	25.9	17.3	17.3		0.9	0.7	0.5	—	
OFF	ON	OFF	OFF	OFF	38.0	38.0	28.5	28.5	19.0	19.0		0.9	0.7	0.6	—	
OFF	ON	OFF	OFF	ON	41.5	41.5	31.1	31.1	20.7	20.7		1.0	0.8	0.6	—	
OFF	ON	OFF	ON	OFF	45.0	45.0	33.7	33.7	22.5	22.5		1.1	0.9	0.6	—	
OFF	ON	OFF	ON	ON	48.4	48.4	36.3	36.3	24.2	24.2		1.1	0.9	0.7	—	
OFF	ON	ON	OFF	OFF	51.9	51.9	38.9	38.9	25.9	25.9		1.2	0.9	0.7	—	
OFF	ON	ON	OFF	ON	55.3	55.3	41.4	41.4	27.6	27.6		1.3	1.0	0.7	—	
OFF	ON	ON	ON	OFF	58.8	58.8	44.1	44.1	29.4	29.4		1.3	1.0	0.8	—	
OFF	ON	ON	ON	ON	62.3	62.3	46.7	46.7	31.1	31.1		1.4	1.1	0.8	—	
ON	OFF	OFF	OFF	OFF	65.7	65.7	49.2	49.2	32.8	32.8	23.9	132.2	0.7	4.0	3.0	—
ON	OFF	OFF	OFF	ON	69.2	69.2	51.9	51.9	34.6	34.6		1.6	1.2	0.9	—	
ON	OFF	OFF	ON	OFF	72.7	72.7	54.5	54.5	36.3	36.3		1.6	1.2	0.9	—	
ON	OFF	OFF	ON	ON	76.1	76.1	57.0	57.0	38.0	38.0		1.7	1.3	0.9	—	
ON	OFF	ON	OFF	OFF	79.6	79.6	59.7	59.7	39.8	39.8		1.8	1.3	1.0	—	
ON	OFF	ON	OFF	ON	83.0	83.0	62.2	62.2	41.5	41.5		1.8	1.4	1.0	—	
ON	OFF	ON	ON	OFF	86.8	86.8	64.8	64.8	43.2	43.2		1.9	1.4	1.0	—	
ON	OFF	ON	ON	ON	90.0	90.0	67.5	67.5	45.0	45.0		2.0	1.5	1.0	—	
ON	ON	OFF	OFF	OFF	93.4	93.4	70.0	70.0	46.7	46.7		2.0	1.5	1.0	—	
ON	ON	OFF	OFF	ON	96.9	96.9	72.6	72.6	48.4	48.4		2.1	1.5	1.1	—	
ON	ON	OFF	ON	OFF	100.3	100.3	75.2	75.2	50.1	50.1		2.2	1.6	1.1	—	
ON	ON	OFF	ON	ON	103.7	103.7	77.8	77.8	51.9	51.9		2.2	1.6	1.1	—	
ON	ON	ON	OFF	OFF	107.1	107.1	80.4	80.4	53.7	53.7		2.3	1.6	1.1	—	
ON	ON	ON	OFF	ON	110.5	110.5	83.0	83.0	55.5	55.5		2.4	1.6	1.1	—	
ON	ON	ON	ON	OFF	113.9	113.9	85.6	85.6	57.3	57.3		2.4	1.6	1.1	—	
ON	ON	ON	ON	ON	117.3	117.3	88.1	88.1	59.1	59.1		2.4	1.6	1.1	—	
ON	ON	ON	ON	ON	120.7	120.7	90.6	90.6	60.9	60.9		2.5	1.7	1.2	—	

■ 呼称速度：75

DIP SW					周速				接続力 (N)		トルク (N・m)		電流値 (A)			
SW1	SW2	SW3	SW4	SW5	RUN A 100%	RUN A+B 75%	RUN B 50%		定格	起動	定格	起動	RUN A	RUN A+B	RUN B	起動
無負荷	定格	無負荷	定格	無負荷	定格	無負荷	定格									
OFF	OFF	OFF	OFF	OFF	12.2	12.2						0.4	—	—	—	
OFF	OFF	OFF	OFF	ON	16.8	16.8	12.6	12.6				0.5	0.4	—	—	
OFF	OFF	OFF	ON	OFF	21.1	21.1	15.8	15.8				0.5	0.5	—	—	
OFF	OFF	OFF	ON	ON	25.3	25.3	18.9	18.9	12.6	12.6		0.6	0.5	0.4	—	
OFF	OFF	ON	OFF	OFF	29.5	29.5	22.1	22.1	14.7	14.7		0.7	0.5	0.4	—	
OFF	OFF	ON	OFF	ON	33.7	33.7	25.2	25.2	16.8	16.8		0.7	0.6	0.5	—	
OFF	OFF	ON	ON	OFF	38.0	38.0	28.5	28.5	19.0	19.0		0.8	0.7	0.5	—	
OFF	OFF	ON	ON	ON	42.2	42.2	31.6	31.6	21.1	21.1		0.9	0.7	0.5	—	
OFF	ON	OFF	OFF	OFF	46.4	46.4	34.8	34.8	23.2	23.2		0.9	0.7	0.6	—	
OFF	ON	OFF	OFF	ON	50.6	50.6	37.9	37.9	25.3	25.3		1.0	0.8	0.6	—	
OFF	ON	OFF	ON	OFF	54.9	54.9	41.1	41.1	27.4	27.4		1.1	0.9	0.6	—	
OFF	ON	OFF	ON	ON	59.1	59.1	44.3	44.3	29.5	29.5		1.1	0.9	0.7	—	
OFF	ON	ON	OFF	OFF	63.3	63.3	47.4	47.4	31.6	31.6		1.2	0.9	0.7	—	
OFF	ON	ON	OFF	ON	67.5	67.5	50.6	50.6	33.7	33.7		1.3	1.0	0.7	—	
OFF	ON	ON	ON	OFF	71.8	71.8	53.8	53.8	35.9	35.9		1.3	1.0	0.8	—	
OFF	ON	ON	ON	ON	76.0	76.0	57.0	57.0	38.0	38.0		1.4	1.1	0.8	—	
ON	OFF	OFF	OFF	OFF	80.2	80.2	60.1	60.1	40.1	40.1	19.6	108.3	0.5	3.2	3.0	—
ON	OFF	OFF	OFF	ON	84.4	84.4	63.3	63.3	42.2	42.2		1.6	1.2	0.9	—	
ON	OFF	OFF	ON	OFF	88.6	88.6	66.4	66.4	44.3	44.3		1.6	1.2	0.9	—	
ON	OFF	OFF	ON	ON	92.9	92.9	69.6	69.6	46.4	46.4		1.7	1.3	0.9	—	
ON	OFF	ON	OFF	OFF	97.1	97.1	72.8	72.8	48.5	48.5		1.8	1.3	1.0	—	
ON	OFF	ON	OFF	ON	101.3	101.3	75.9	75.9	50.6	50.6		1.8	1.4	1.0	—	
ON	OFF	ON	ON	OFF	105.5	105.5	79.1	79.1	52.7	52.7		1.9	1.4	1.0	—	
ON	OFF	ON	ON	ON	109.8	109.8	82.3	82.3	54.9	54.9		2.0	1.5	1.0	—	
ON	ON	OFF	OFF	OFF	114.0	114.0	85.5	85.5	57.0	57.0		2.2	1.6	1.1	—	
ON	ON	OFF	OFF	ON	118.2	118.2	88.6	88.6	59.1	59.1		2.2	1.6	1.1	—	
ON	ON	OFF	ON	OFF	122.4	122.4	91.8	91.8	61.2	61.2		2.3	1.6	1.1	—	
ON	ON	OFF	ON	ON	126.6	126.6	95.0	95.0	63.3	63.3		2.4	1.6	1.1	—	
ON	ON	ON	OFF	OFF	130.8	130.8	98.2	98.2	65.4	65.4		2.4	1.6	1.1	—	
ON	ON	ON	OFF	ON	135.0	135.0	101.4	101.4	67.5	67.5		2.4	1.6	1.1	—	
ON	ON	ON	ON	OFF	139.2	139.2	104.6	104.6	69.6	69.6		2.5	1.7	1.2	—	
ON	ON	ON	ON	ON	143.4	143.4	107.8	107.8	71.7	71.7		2.5	1.7	1.2	—	

■ 呼称速度：95

DIP SW					周速				接続力 (N)		トルク (N・m)		電流値 (A)			
SW1	SW2	SW3	SW4	SW5	RUN A 100%	RUN A+B 75%	RUN B 50%		定格	起動	定格	起動	RUN A	RUN A+B	RUN B	起動
無負荷	定格	無負荷	定格	無負荷	定格	無負荷	定格									
OFF	OFF	OFF	OFF	OFF	16.1	16.1						0.4	—	—	—	
OFF	OFF	OFF	OFF	ON	22.3	22.3	16.7	16.7				0.5	0.4	—	—	
OFF	OFF	OFF	ON	OFF	27.8	27.8	20.8	20.8				0.5	0.5	—	—	
OFF	OFF	OFF	ON	ON	33.4	33.4	25.0	25.0	16.7	16.7		0.6	0.5	0.4	—	
OFF	OFF	ON	OFF	OFF	39.0	39.0	29.2	29.2	19.5	19.5		0.7	0.5	0.4	—	
OFF	OFF	ON	OFF	ON	44.6	44.6	33.4	33.4	22.3	22.3		0.7	0.6	0.5	—	
OFF	OFF	ON	ON	OFF	50.1	50.1	37.5	37.5	25.0	25.0		0.8	0.7	0.5	—	
OFF	OFF	ON	ON	ON	55.7	55.7	41.7	41.7	27.8	27.8		0.9	0.7	0.5	—	
OFF	ON	OFF	OFF	OFF	61.3	61.3	45.9	45.9	30.6	30.6		1.0	0.7	0.6	—	
OFF	ON	OFF	OFF	ON	66.9	66.9	50.1	50.1	33.4	33.4		1.0	0.8	0.6	—	
OFF	ON	OFF	ON	OFF	72.4	72.4	54.3	54.3	36.2	36.2		1.1	0.9	0.6	—	
OFF	ON	OFF	ON	ON	78.0	78.0	58.5	58.5	39.0	39.0		1.1	0.9	0.7	—	
OFF	ON	ON	OFF	OFF	83.6	83.6	62.7	62.7	41.8	41.8		1.2	0.9	0.7	—	
OFF	ON	ON	OFF	ON	89.2	89.2	66.9	66.9	44.6	44.6		1.3	1.0	0.7	—	
OFF	ON	ON	ON	OFF	94.7	94.7	71.0	71.0	47.3	47.3		1.3	1.0	0.8	—	
OFF	ON	ON	ON	ON	100.3	100.3	75.2	75.2	50.1	50.1		1.4	1.1	0.8	—	
ON	OFF	OFF	OFF	OFF	105.9	105.9	79.4	79.4	52.9	52.9	14.8	82.1	0.4	2.4	3.0	—
ON	OFF	OFF	OFF	ON	111.5	111.5	83.6	83.6	55.7	55.7		1.6	1.2	0.9	—	
ON	OFF	OFF	ON	OFF	117.0	117.0	87.7	87.7	58.5	58.5		1.6	1.2	0.9	—	
ON	OFF	OFF	ON	ON	122.6	122.6	91.9	91.9	61.3	61.3		1.7	1.3	0.9	—	
ON	OFF	ON	OFF	OFF	128.2	128.2	96.1	96.1	64.1	64.1		1.8	1.3	1.0	—	
ON	OFF	ON	OFF	ON	133.8	133.8	100.3	100.3	66.9	66.9		1.8	1.4	1.0	—	
ON	OFF	ON	ON	OFF	139.5	139.5	104.6	104.6	69.6	69.6		1.9	1.4	1.0	—	
ON	OFF	ON	ON	ON	145.1	145.1	108.9	108.9	72.4	72.4		2.0	1.5	1.0	—	
ON	ON	OFF	OFF	OFF	150.7	150.7	113.2	113.2	75.2	75.2		2.1	1.5	1.1	—	
ON	ON	OFF	OFF	ON	156.3	156.3	117.5	117.5	78.0	78.0		2.2	1.6	1.1	—	
ON	ON															



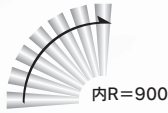
# φ42.7 DCブラシレス テーパ仕様 SENERGY

パイプ径：φ42.7

電源：DC24V

表面処理：ユニクロメッキ

リード線色：ブラック



J形コネクタ

ローラ幅600μセンター部の特性となります。

■ 呼称速度：20

DIP SW					周速				接続力(N)		トルク(N·m)		電流値(A)					
SW1	SW2	SW3	SW4	SW5	無負荷	100%	75%	50%	定格	起動	定格	起動	RUN A	RUN A+B	RUN B	定格	起動	
OFF	OFF	OFF	OFF	OFF	3.1	3.1							0.4	—	—			
OFF	OFF	OFF	ON	OFF	4.3	4.3	3.2	3.2					0.5	0.4	—			
OFF	OFF	OFF	ON	ON	5.4	5.4	4.0	4.0					0.5	0.5	—			
OFF	OFF	OFF	ON	ON	6.5	6.5	4.8	4.8	3.2	3.2			0.6	0.5	0.4			
OFF	OFF	ON	OFF	OFF	7.6	7.6	5.7	5.7	3.8	3.8			0.7	0.5	0.4			
OFF	OFF	ON	OFF	ON	8.6	8.6	6.4	6.4	4.3	4.3			0.7	0.6	0.5			
OFF	OFF	ON	ON	OFF	9.7	9.7	7.2	7.2	4.8	4.8			0.8	0.7	0.5			
OFF	OFF	ON	ON	ON	10.8	10.8	8.1	8.1	5.4	5.4			0.9	0.7	0.5			
OFF	ON	OFF	OFF	OFF	11.9	11.9	8.9	8.9	5.9	5.9			0.9	0.7	0.6			
OFF	ON	OFF	OFF	ON	13.0	13.0	9.7	9.7	6.5	6.5			1.0	0.8	0.6			
OFF	ON	OFF	ON	ON	14.1	14.1	10.5	10.5	7.0	7.0			1.1	0.9	0.6			
OFF	ON	ON	OFF	OFF	15.2	15.2	11.4	11.4	7.6	7.6			1.1	0.9	0.7			
OFF	ON	ON	ON	OFF	16.3	16.3	12.2	12.2	8.1	8.1			1.2	0.9	0.7			
OFF	ON	ON	ON	ON	17.3	17.3	12.9	12.9	8.6	8.6			1.3	1.0	0.7			
OFF	ON	ON	ON	OFF	18.4	18.4	13.8	13.8	9.2	9.2			1.3	1.0	0.8			
OFF	ON	ON	ON	ON	19.5	19.5	14.6	14.6	9.7	9.7			1.4	1.1	0.8			
ON	OFF	OFF	OFF	OFF	20.6	20.6	15.4	15.4	10.3	10.3	76.2	421.0	1.5	1.1	0.8			
ON	OFF	OFF	OFF	ON	21.7	21.7	16.2	16.2	10.8	10.8			1.6	1.2	0.9			
ON	OFF	OFF	ON	OFF	22.8	22.8	17.1	17.1	11.4	11.4			1.6	1.2	0.9			
ON	OFF	OFF	ON	ON	23.9	23.9	17.9	17.9	11.9	11.9			1.7	1.3	0.9			
ON	OFF	ON	OFF	OFF	25.0	25.0	18.7	18.7	12.5	12.5			1.8	1.3	1.0			
ON	OFF	ON	OFF	ON	26.0	26.0	19.5	19.5	13.0	13.0			1.8	1.4	1.0			
ON	OFF	ON	ON	OFF	26.6	26.6	19.9	19.9	13.3	13.3			1.9	1.4	1.0			
ON	OFF	ON	ON	ON	27.1	27.1	20.3	20.3	13.5	13.5			2.0	1.5	1.0			
ON	ON	OFF	OFF	OFF	27.7	27.7	20.7	20.7	13.8	13.8			2.0	1.5	1.0			
ON	ON	OFF	OFF	ON	28.2	28.2	21.1	21.1	14.1	14.1			2.1	1.5	1.1			
ON	ON	OFF	ON	OFF	28.8	28.8	21.6	21.6	14.4	14.4			2.2	1.6	1.1			
ON	ON	OFF	ON	ON	29.3	29.3	21.9	21.9	14.6	14.6			2.2	1.6	1.1			
ON	ON	ON	OFF	OFF	29.8	29.8	22.3	22.3	14.9	14.9			2.3	1.6	1.1			
ON	ON	ON	OFF	ON	30.4	30.4	22.8	22.8	15.2	15.2			2.4	1.6	1.1			
ON	ON	ON	ON	OFF	30.9	30.9	23.1	23.1	15.4	15.4			2.4	1.6	1.1			
ON	ON	ON	ON	ON	31.5	31.5	23.6	23.6	15.7	15.7			2.5	1.7	1.2			

■ 呼称速度：35

DIP SW					周速				接続力(N)		トルク(N·m)		電流値(A)					
SW1	SW2	SW3	SW4	SW5	無負荷	100%	75%	50%	定格	起動	定格	起動	RUN A	RUN A+B	RUN B	定格	起動	
OFF	OFF	OFF	OFF	OFF	5.6	5.6							0.4	—	—			
OFF	OFF	OFF	ON	OFF	7.8	7.8	5.8	5.8					0.5	0.4	—			
OFF	OFF	OFF	ON	ON	9.7	9.7	7.2	7.2					0.5	0.5	—			
OFF	OFF	ON	OFF	OFF	11.7	11.7	8.7	8.7	5.8	5.8			0.6	0.5	0.4			
OFF	OFF	ON	OFF	ON	13.6	13.6	10.2	10.2	6.8	6.8			0.7	0.5	0.4			
OFF	OFF	ON	ON	OFF	15.6	15.6	11.7	11.7	7.8	7.8			0.7	0.6	0.5			
OFF	OFF	ON	ON	ON	17.6	17.6	13.2	13.2	8.8	8.8			0.8	0.7	0.5			
OFF	ON	OFF	OFF	OFF	19.5	19.5	14.6	14.6	9.7	9.7			0.9	0.7	0.5			
OFF	ON	OFF	OFF	ON	21.5	21.5	16.1	16.1	10.7	10.7			0.9	0.7	0.6			
OFF	ON	OFF	ON	OFF	23.4	23.4	17.5	17.5	11.7	11.7			1.0	0.8	0.6			
OFF	ON	OFF	ON	ON	25.4	25.4	19.0	19.0	12.7	12.7			1.1	0.9	0.6			
OFF	ON	ON	OFF	OFF	27.3	27.3	20.4	20.4	13.6	13.6			1.1	0.9	0.7			
OFF	ON	ON	OFF	ON	29.3	29.3	21.9	21.9	14.6	14.6			1.2	0.9	0.7			
OFF	ON	ON	ON	OFF	31.3	31.3	23.4	23.4	15.6	15.6			1.3	1.0	0.7			
OFF	ON	ON	ON	ON	33.2	33.2	24.9	24.9	16.6	16.6			1.3	1.0	0.8			
OFF	ON	ON	ON	OFF	35.2	35.2	26.4	26.4	17.6	17.6			1.4	1.1	0.8			
ON	OFF	OFF	OFF	OFF	37.1	37.1	27.8	27.8	18.5	18.5			1.5	1.1	0.8			
ON	OFF	OFF	OFF	ON	39.1	39.1	29.3	29.3	19.5	19.5			1.6	1.2	0.9			
ON	OFF	OFF	ON	OFF	41.0	41.0	30.7	30.7	20.5	20.5			1.6	1.2	0.9			
ON	OFF	OFF	ON	ON	43.0	43.0	32.2	32.2	21.5	21.5			1.7	1.3	0.9			
ON	OFF	ON	OFF	OFF	45.0	45.0	33.7	33.7	22.5	22.5			1.8	1.3	1.0			
ON	OFF	ON	OFF	ON	46.9	46.9	35.1	35.1	23.4	23.4			1.8	1.4	1.0			
ON	OFF	ON	ON	OFF	47.9	47.9	35.9	35.9	23.9	23.9			1.9	1.4	1.0			
ON	OFF	ON	ON	ON	48.9	48.9	36.6	36.6	24.4	24.4			2.0	1.5	1.0			
ON	ON	OFF	OFF	OFF	49.9	49.9	37.4	37.4	24.9	24.9			2.0	1.5	1.0			
ON	ON	OFF	OFF	ON	50.8	50.8	38.1	38.1	25.4	25.4			2.1	1.5	1.1			
ON	ON	OFF	ON	OFF	51.8	51.8	38.8	38.8	25.9	25.9			2.2	1.6	1.1			
ON	ON	OFF	ON	ON	52.8	52.8	39.6	39.6	26.4	26.4			2.2	1.6	1.1			
ON	ON	ON	OFF	OFF	53.8	53.8	40.3	40.3	26.9	26.9			2.3	1.6	1.1			
ON	ON	ON	OFF	ON	54.7	54.7	41.0	41.0	27.3	27.3			2.4	1.6	1.1			
ON	ON	ON	ON	OFF	55.7	55.7	41.7	41.7	27.8	27.8			2.4	1.6	1.1			
ON	ON	ON	ON	ON	56.7	56.7	42.5	42.5	28.3	28.3			2.5	1.7	1.2			

■ 呼称速度：15

DIP SW					周速				接続力(N)		トルク(N·m)		電流値(A)					
SW1	SW2	SW3	SW4	SW5	無負荷	100%	75%	50%	定格	起動	定格	起動	RUN A	RUN A+B	RUN B	定格	起動	
OFF	OFF	OFF	OFF	OFF	2.3	2.3							0.4	—	—			
OFF	OFF	OFF	ON	OFF	3.1	3.1	2.3	2.3					0.5	0.4	—			
OFF	OFF	OFF	ON	ON	3.9	3.9	2.9	2.9					0.5	0.5	—			
OFF	OFF	ON	OFF	OFF	4.7	4.7	3.5	3.5	2.3	2.3			0.6	0.5	0.4			
OFF	OFF	ON	OFF	ON	5.5	5.5	4.1	4.1	2.7	2.7			0.7	0.5	0.4			
OFF	OFF	ON	ON	OFF	6.3	6.3	4.7	4.7	3.1	3.1			0.7	0.6	0.5			
OFF	OFF	ON	ON	ON	7.1	7.1	5.3	5.3	3.5	3.5			0.8	0.7	0.5			
OFF	ON	OFF	OFF	OFF	7.9	7.9	5.9	5.9	3.9	3.9			0.9	0.7	0.5			
OFF	ON	OFF	OFF	ON	8.7	8.7	6.5	6.5	4.3	4.3			0.9	0.7	0.6			
OFF	ON	OFF	ON	ON	9.5	9.5	7.1	7.1	4.7	4.7			1.0	0.8	0.6			
OFF	ON	ON	OFF	OFF	10.3	10.3	7.7	7.7	5.1	5.1			1.1	0.9	0.6			
OFF	ON	ON	OFF	ON	11.1	11.1	8.3	8.3	5.5	5.5			1.1	0.9	0.7			
OFF	ON	ON	ON	OFF	11.9	11.9	8.9	8.9	5.9	5.9			1.2	0.9	0.7			
OFF	ON	ON	ON	ON	12.7	12.7	9.5	9.5	6.3	6.3			1.3	1.0	0.7			
OFF	ON	ON	ON	OFF	13.5	13.5	10.1	10.1	6.7	6.7			1.3	1.0	0.8			
OFF	ON	ON	ON	ON	14.3	14.3	10.7	10.7	7.1	7.1			1.4	1.1	0.8			
ON	OFF	OFF	OFF	OFF	15.1	15.1	11.3	11.3	7.5	7.5	104.2	575.2	1.5	1.1	0.8			
ON	OFF	OFF	OFF	ON	15.9	15.9	11.9	11.9	7.9	7.9			1.6	1.2	0.9			
ON	OFF	OFF	ON	OFF	16.7	16.7	12.5	12.5	8.3	8.3			1.6	1.2	0.9			
ON	OFF	OFF	ON	ON	17.5	17.5	13.1	13.1	8.7	8.7			1.7	1.3	0.9			
ON	OFF	ON	OFF	OFF														

■ 呼称速度：60

DIP SW					周速				接続力 (N)		トルク (N·m)		電流値 (A)			
SW1	SW2	SW3	SW4	SW5	RUN A 100%	RUN A+B 75%	RUN B 50%		定格	起動	定格	起動	RUN A	RUN A+B	RUN B	起動
無負荷	定格	無負荷	定格	無負荷	定格	無負荷	定格									
OFF	OFF	OFF	OFF	OFF	9.4	9.4						0.4	—	—	—	
OFF	OFF	OFF	OFF	ON	13.0	13.0	9.7	9.7				0.5	0.4	—	—	
OFF	OFF	OFF	ON	OFF	16.3	16.3	12.2	12.2				0.5	0.5	—	—	
OFF	OFF	OFF	ON	ON	19.5	19.5	14.6	14.6				0.6	0.5	0.4	—	
OFF	OFF	ON	OFF	OFF	22.8	22.8	17.1	17.1	11.4	11.4		0.7	0.5	0.4	—	
OFF	OFF	ON	OFF	ON	26.0	26.0	19.5	19.5	13.0	13.0		0.7	0.6	0.5	—	
OFF	OFF	ON	ON	OFF	29.3	29.3	21.9	21.9	14.6	14.6		0.8	0.7	0.5	—	
OFF	OFF	ON	ON	ON	32.6	32.6	24.4	24.4	16.3	16.3		0.9	0.7	0.5	—	
OFF	ON	OFF	OFF	OFF	35.8	35.8	26.8	26.8	17.9	17.9		0.9	0.7	0.6	—	
OFF	ON	OFF	OFF	ON	39.1	39.1	29.3	29.3	19.5	19.5		1.0	0.8	0.6	—	
OFF	ON	OFF	ON	OFF	42.4	42.4	31.8	31.8	21.2	21.2		1.1	0.9	0.6	—	
OFF	ON	OFF	ON	ON	45.6	45.6	34.2	34.2	22.8	22.8		1.1	0.9	0.7	—	
OFF	ON	ON	OFF	OFF	48.9	48.9	36.6	36.6	24.4	24.4		1.2	0.9	0.7	—	
OFF	ON	ON	OFF	ON	52.1	52.1	39.0	39.0	26.0	26.0		1.3	1.0	0.7	—	
OFF	ON	ON	ON	OFF	55.4	55.4	41.5	41.5	27.7	27.7		1.3	1.0	0.8	—	
OFF	ON	ON	ON	ON	58.7	58.7	44.0	44.0	29.3	29.3		1.4	1.1	0.8	—	
ON	OFF	OFF	OFF	OFF	61.9	61.9	46.4	46.4	30.9	30.9	25.4	140.3	0.7	4.0	3.0	
ON	OFF	OFF	OFF	ON	65.2	65.2	48.9	48.9	32.6	32.6		1.6	1.2	0.9	—	
ON	OFF	OFF	ON	OFF	68.4	68.4	51.3	51.3	34.2	34.2		1.6	1.2	0.9	—	
ON	OFF	OFF	ON	ON	71.7	71.7	53.7	53.7	35.8	35.8		1.7	1.3	0.9	—	
ON	OFF	ON	OFF	OFF	75.0	75.0	56.2	56.2	37.5	37.5		1.8	1.3	1.0	—	
ON	OFF	ON	OFF	ON	78.2	78.2	58.6	58.6	39.1	39.1		1.8	1.4	1.0	—	
ON	OFF	ON	ON	OFF	79.9	79.9	59.9	59.9	39.9	39.9		1.9	1.4	1.0	—	
ON	OFF	ON	ON	ON	81.5	81.5	61.1	61.1	40.7	40.7		2.0	1.5	1.0	—	
ON	ON	OFF	OFF	OFF	83.1	83.1	62.3	62.3	41.5	41.5		2.0	1.5	1.0	—	
ON	ON	OFF	OFF	ON	84.8	84.8	63.6	63.6	42.4	42.4		2.1	1.5	1.1	—	
ON	ON	OFF	ON	OFF	86.4	86.4	64.8	64.8	43.2	43.2		2.2	1.6	1.1	—	
ON	ON	OFF	ON	ON	88.0	88.0	66.0	66.0	44.0	44.0		2.2	1.6	1.1	—	
ON	ON	ON	OFF	OFF	89.6	89.6	67.2	67.2	44.8	44.8		2.3	1.6	1.1	—	
ON	ON	ON	OFF	ON	91.3	91.3	68.4	68.4	45.6	45.6		2.4	1.6	1.1	—	
ON	ON	ON	ON	OFF	92.9	92.9	69.6	69.6	46.4	46.4		2.4	1.6	1.1	—	
ON	ON	ON	ON	ON	94.5	94.5	70.8	70.8	47.2	47.2		2.5	1.7	1.2	—	

■ 呼称速度：75

DIP SW					周速				接続力 (N)		トルク (N·m)		電流値 (A)			
SW1	SW2	SW3	SW4	SW5	RUN A 100%	RUN A+B 75%	RUN B 50%		定格	起動	定格	起動	RUN A	RUN A+B	RUN B	起動
無負荷	定格	無負荷	定格	無負荷	定格	無負荷	定格									
OFF	OFF	OFF	OFF	OFF	11.5	11.5						0.4	—	—	—	
OFF	OFF	OFF	OFF	ON	15.9	15.9	11.9	11.9				0.5	0.4	—	—	
OFF	OFF	OFF	ON	OFF	19.8	19.8	14.8	14.8				0.5	0.5	—	—	
OFF	OFF	OFF	ON	ON	23.8	23.8	17.8	17.8	11.9	11.9		0.6	0.5	0.4	—	
OFF	OFF	ON	OFF	OFF	27.8	27.8	20.8	20.8	13.9	13.9		0.7	0.5	0.4	—	
OFF	OFF	ON	OFF	ON	31.8	31.8	23.8	23.8	15.9	15.9		0.7	0.6	0.5	—	
OFF	OFF	ON	ON	OFF	35.8	35.8	26.8	26.8	17.9	17.9		0.8	0.7	0.5	—	
OFF	OFF	ON	ON	ON	39.7	39.7	29.7	29.7	19.8	19.8		0.9	0.7	0.5	—	
OFF	ON	OFF	OFF	OFF	43.7	43.7	32.7	32.7	21.8	21.8		0.9	0.7	0.6	—	
OFF	ON	OFF	OFF	ON	47.7	47.7	35.7	35.7	23.8	23.8		1.0	0.8	0.6	—	
OFF	ON	OFF	ON	OFF	51.7	51.7	38.7	38.7	25.8	25.8	20.8	115.0	0.5	3.2	3.0	
OFF	ON	OFF	ON	ON	55.7	55.7	41.7	41.7	27.8	27.8		1.1	0.9	0.7	—	
OFF	ON	ON	OFF	OFF	59.6	59.6	44.7	44.7	29.8	29.8		1.2	0.9	0.7	—	
OFF	ON	ON	OFF	ON	63.6	63.6	47.7	47.7	31.8	31.8		1.3	1.0	0.7	—	
OFF	ON	ON	ON	OFF	67.6	67.6	50.7	50.7	33.8	33.8		1.3	1.0	0.8	—	
OFF	ON	ON	ON	ON	71.6	71.6	53.7	53.7	35.8	35.8		1.4	1.1	0.8	—	
ON	OFF	OFF	OFF	OFF	75.6	75.6	56.7	56.7	37.8	37.8		1.5	1.1	0.8	—	
ON	OFF	OFF	OFF	ON	79.5	79.5	59.6	59.6	39.7	39.7		1.6	1.2	0.9	—	
ON	OFF	OFF	ON	OFF	83.5	83.5	62.6	62.6	41.7	41.7		1.6	1.2	0.9	—	
ON	OFF	OFF	ON	ON	87.5	87.5	65.6	65.6	43.7	43.7		1.7	1.3	0.9	—	
ON	OFF	ON	OFF	OFF	91.5	91.5	68.6	68.6	45.7	45.7		1.8	1.3	1.0	—	
ON	OFF	ON	OFF	ON	95.5	95.5	71.6	71.6	47.7	47.7		1.8	1.4	1.0	—	
ON	OFF	ON	ON	OFF	99.4	99.4	74.5	74.5	49.7	49.7		1.9	1.4	1.0	—	
ON	OFF	ON	ON	ON	99.4	99.4	74.5	74.5	49.7	49.7		2.0	1.5	1.0	—	
ON	ON	OFF	OFF	OFF	101.4	101.4	76.0	76.0	50.7	50.7		2.0	1.5	1.0	—	
ON	ON	OFF	OFF	ON	103.4	103.4	77.5	77.5	51.7	51.7		2.1	1.5	1.1	—	
ON	ON	OFF	ON	OFF	105.4	105.4	79.0	79.0	52.7	52.7		2.2	1.6	1.1	—	
ON	ON	OFF	ON	ON	107.4	107.4	80.5	80.5	53.7	53.7		2.2	1.6	1.1	—	
ON	ON	ON	OFF	OFF	109.4	109.4	82.0	82.0	54.7	54.7		2.3	1.6	1.1	—	
ON	ON	ON	OFF	ON	111.4	111.4	83.5	83.5	55.7	55.7		2.4	1.6	1.1	—	
ON	ON	ON	ON	OFF	113.4	113.4	85.0	85.0	56.7	56.7		2.4	1.6	1.1	—	
ON	ON	ON	ON	ON	115.4	115.4	86.5	86.5	57.7	57.7		2.5	1.7	1.2	—	

■ 呼称速度：95

DIP SW					周速				接続力 (N)		トルク (N·m)		電流値 (A)			
SW1	SW2	SW3	SW4	SW5	RUN A 100%	RUN A+B 75%	RUN B 50%		定格	起動	定格	起動	RUN A	RUN A+B	RUN B	起動
無負荷	定格	無負荷	定格	無負荷	定格	無負荷	定格									
OFF	OFF	OFF	OFF	OFF	15.2	15.2						0.4	—	—	—	
OFF	OFF	OFF	OFF	ON	21.0	21.0	15.7	15.7				0.5	0.4	—	—	
OFF	OFF	OFF	ON	OFF	26.2	26.2	19.6	19.6				0.5	0.5	—	—	
OFF	OFF	OFF	ON	ON	31.5	31.5	23.6	23.6	15.7	15.7		0.6	0.5	0.4	—	
OFF	OFF	ON	OFF	OFF	36.7	36.7	27.5	27.5	18.3	18.3		0.7	0.5	0.4	—	
OFF	OFF	ON	OFF	ON	42.0	42.0	31.5	31.5	21.0	21.0		0.7	0.6	0.5	—	
OFF	OFF	ON	ON	OFF	47.2	47.2	35.4	35.4	23.6	23.6		0.8	0.7	0.5	—	
OFF	OFF	ON	ON	ON	52.5	52.5	39.3	39.3	26.2	26.2		0.9	0.7	0.5	—	
OFF	ON	OFF	OFF	OFF	57.7	57.7	43.2	43.2	28.8	28.8		0.9	0.7	0.6	—	
OFF	ON	OFF	OFF	ON	63.0	63.0	47.2	47.2	31.5	31.5		1.0	0.8	0.6	—	
OFF	ON	OFF	ON	OFF	68.2	68.2	51.1	51.1	34.1	34.1		1.1	0.9	0.6	—	
OFF	ON	OFF	ON	ON	73.5	73.5	55.1	55.1	36.7	36.7		1.1	0.9	0.7	—	
OFF	ON	ON	OFF	OFF	78.7	78.7	59.0	59.0	39.3	39.3		1.2	0.9	0.7	—	
OFF	ON	ON	OFF	ON	84.0	84.0	63.0	63.0	42.0	42.0		1.3	1.0	0.7	—	
OFF	ON	ON	ON	OFF	89.2	89.2	66.9	66.9	44.6	44.6		1.3	1.0	0.8	—	
OFF	ON	ON	ON	ON	94.5	94.5	70.8	70.8	47.2	47.2		1.4	1.1	0.8	—	
ON	OFF	OFF	OFF	OFF	99.8	99.8	74.8	74.8	49.9	49.9	15.7	87.1	0.4	2.4	3.0	
ON	OFF	OFF	OFF	ON	105.0	105.0	78.7	78.7	52.5	52.5		1.6	1.2	0.9	—	
ON	OFF	OFF	ON	OFF	110.3	110.3	82.7	82.7	55.1	55.1		1.6	1.2	0.9	—	
ON	OFF	OFF	ON	ON	115.5	115.5	86.6	86.6	57.7	57.7		1.7	1.3	0.9	—	
ON	OFF	ON	OFF	OFF	120.8	120.8	90.6	90.6	60.4	60.4		1.8	1.3	1.0	—	
ON	OFF	ON	OFF	ON	126.0	126.0	94.5	94.5	63.0	63.0		1.8	1.4	1.0	—	
ON	OFF	ON	ON	OFF	128.6	128.6	96.4	96.4	64.3	64.3		1.9	1.4	1.0	—	
ON	OFF	ON	ON	ON	131.3	131.3	98.4	98.4	65.6	65.6		2.0	1.5	1.0	—	
ON	ON	OFF	OFF	OFF	133.9	133.9	100.4	100.4	66.9	66.9		2.0	1.5	1.0	—	
ON	ON	OFF	OFF	ON	136.5	136.5	102.3	102.3	68.2	68.2		2.1	1.5	1.1	—	
ON	ON	OFF	ON	OFF	139.2	139.2	104.4	104.4	69.6	69.6		2.2	1.6	1.1	—	
ON	ON	OFF	ON	ON	141.8	141.8	106.3									

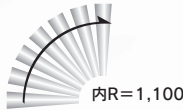
# φ52 DCブラシレス テーパー仕様 SENERGY

パイプ径：φ52

電源：DC24V

表面処理：ユニクロメッキ

リード線色：ブラック



ローラ幅400μセンター部の特性となります。

■ 呼称速度：20

DIP SW					周速				接続力(N)		トルク(N·m)		電流値(A)			
SW1	SW2	SW3	SW4	SW5	無負荷	定格	RUN A+B 75%	RUN B 50%	定格	起動	定格	起動	RUN A	RUN A+B	RUN B	起動
OFF	OFF	OFF	OFF	OFF	3.4	3.4							0.4	—	—	—
OFF	OFF	OFF	ON	OFF	4.6	4.6	3.4	3.4					0.5	0.4	—	—
OFF	OFF	OFF	ON	ON	5.8	5.8	4.3	4.3					0.5	0.5	—	—
OFF	OFF	OFF	ON	ON	7.0	7.0	5.2	5.2	3.5	3.5			0.6	0.5	0.4	—
OFF	OFF	ON	OFF	OFF	8.2	8.2	6.1	6.1	4.1	4.1			0.7	0.5	0.4	—
OFF	OFF	ON	OFF	ON	9.3	9.3	6.9	6.9	4.6	4.6			0.7	0.6	0.5	—
OFF	OFF	ON	ON	OFF	10.5	10.5	7.8	7.8	5.2	5.2			0.8	0.7	0.5	—
OFF	OFF	ON	ON	ON	11.7	11.7	8.7	8.7	5.8	5.8			0.9	0.7	0.5	—
OFF	ON	OFF	OFF	OFF	12.9	12.9	9.6	9.6	6.4	6.4			0.9	0.7	0.6	—
OFF	ON	OFF	OFF	ON	14.0	14.0	10.5	10.5	7.0	7.0			1.0	0.8	0.6	—
OFF	ON	OFF	ON	ON	15.2	15.2	11.4	11.4	7.6	7.6			1.1	0.9	0.6	—
OFF	ON	ON	OFF	OFF	16.4	16.4	12.3	12.3	8.2	8.2			1.1	0.9	0.7	—
OFF	ON	ON	OFF	ON	17.5	17.5	13.1	13.1	8.7	8.7			1.2	0.9	0.7	—
OFF	ON	ON	ON	OFF	18.7	18.7	14.0	14.0	9.3	9.3			1.3	1.0	0.7	—
OFF	ON	ON	ON	ON	19.9	19.9	14.9	14.9	9.9	9.9			1.3	1.0	0.8	—
OFF	ON	ON	ON	ON	21.1	21.1	15.8	15.8	10.5	10.5			1.4	1.1	0.8	—
ON	OFF	OFF	OFF	OFF	22.2	22.2	16.6	16.6	11.1	11.1			1.5	1.1	0.8	—
ON	OFF	OFF	OFF	ON	23.4	23.4	17.5	17.5	11.7	11.7			1.6	1.2	0.9	—
ON	OFF	OFF	ON	ON	24.6	24.6	18.4	18.4	12.3	12.3			1.6	1.2	0.9	—
ON	OFF	ON	OFF	OFF	25.8	25.8	19.3	19.3	12.9	12.9			1.7	1.3	0.9	—
ON	OFF	ON	OFF	ON	26.9	26.9	20.1	20.1	13.4	13.4			1.8	1.3	1.0	—
ON	OFF	ON	ON	OFF	28.1	28.1	21.0	21.0	14.0	14.0			1.8	1.4	1.0	—
ON	OFF	ON	ON	ON	28.7	28.7	21.5	21.5	14.3	14.3			1.9	1.4	1.0	—
ON	OFF	ON	ON	ON	29.3	29.3	21.9	21.9	14.6	14.6			2.0	1.5	1.0	—
ON	ON	OFF	OFF	OFF	29.9	29.9	22.4	22.4	14.9	14.9			2.0	1.5	1.0	—
ON	ON	OFF	OFF	ON	30.5	30.5	22.8	22.8	15.2	15.2			2.1	1.5	1.1	—
ON	ON	OFF	ON	OFF	31.0	31.0	23.2	23.2	15.5	15.5			2.2	1.6	1.1	—
ON	ON	OFF	ON	ON	31.6	31.6	23.7	23.7	15.8	15.8			2.2	1.6	1.1	—
ON	ON	ON	OFF	OFF	32.2	32.2	24.1	24.1	16.1	16.1			2.3	1.6	1.1	—
ON	ON	ON	OFF	ON	32.8	32.8	24.6	24.6	16.4	16.4			2.4	1.6	1.1	—
ON	ON	ON	ON	OFF	33.4	33.4	25.0	25.0	16.7	16.7			2.4	1.6	1.1	—
ON	ON	ON	ON	ON	34.0	34.0	25.5	25.5	17.0	17.0			2.5	1.7	1.2	—

■ 呼称速度：35

DIP SW					周速				接続力(N)		トルク(N·m)		電流値(A)			
SW1	SW2	SW3	SW4	SW5	無負荷	定格	RUN A+B 75%	RUN B 50%	定格	起動	定格	起動	RUN A	RUN A+B	RUN B	起動
OFF	OFF	OFF	OFF	OFF	6.1	6.1							0.4	—	—	—
OFF	OFF	OFF	ON	OFF	8.4	8.4	6.3	6.3					0.5	0.4	—	—
OFF	OFF	OFF	ON	ON	10.5	10.5	7.8	7.8					0.5	0.5	—	—
OFF	OFF	ON	OFF	OFF	12.6	12.6	9.4	9.4	6.3	6.3			0.6	0.5	0.4	—
OFF	OFF	ON	OFF	ON	14.7	14.7	11.0	11.0	7.3	7.3			0.7	0.5	0.4	—
OFF	OFF	ON	ON	OFF	16.8	16.8	12.6	12.6	8.4	8.4			0.7	0.6	0.5	—
OFF	OFF	ON	ON	ON	19.0	19.0	14.2	14.2	9.5	9.5			0.8	0.7	0.5	—
OFF	ON	OFF	OFF	OFF	21.1	21.1	15.8	15.8	10.5	10.5			0.9	0.7	0.5	—
OFF	ON	OFF	OFF	ON	23.2	23.2	17.4	17.4	11.6	11.6			0.9	0.7	0.6	—
OFF	ON	OFF	ON	OFF	25.3	25.3	18.9	18.9	12.6	12.6			1.0	0.8	0.6	—
OFF	ON	OFF	ON	ON	27.4	27.4	20.5	20.5	13.7	13.7			1.1	0.9	0.6	—
OFF	ON	ON	OFF	OFF	29.5	29.5	22.1	22.1	14.7	14.7			1.1	0.9	0.7	—
OFF	ON	ON	OFF	ON	31.6	31.6	23.7	23.7	15.8	15.8			1.2	0.9	0.7	—
OFF	ON	ON	ON	OFF	33.7	33.7	25.2	25.2	16.8	16.8			1.3	1.0	0.7	—
OFF	ON	ON	ON	ON	35.8	35.8	26.8	26.8	17.9	17.9			1.3	1.0	0.8	—
OFF	ON	ON	ON	ON	38.0	38.0	28.5	28.5	19.0	19.0			1.4	1.1	0.8	—
ON	OFF	OFF	OFF	OFF	40.1	40.1	30.0	30.0	20.0	20.0			1.5	1.1	0.8	—
ON	OFF	OFF	OFF	ON	42.2	42.2	31.6	31.6	21.1	21.1			1.6	1.2	0.9	—
ON	OFF	OFF	ON	ON	44.3	44.3	33.2	33.2	22.1	22.1			1.6	1.2	0.9	—
ON	OFF	ON	OFF	OFF	46.4	46.4	34.8	34.8	23.2	23.2			1.7	1.3	0.9	—
ON	OFF	ON	OFF	ON	48.5	48.5	36.3	36.3	24.2	24.2			1.8	1.3	1.0	—
ON	OFF	ON	ON	OFF	50.6	50.6	37.9	37.9	25.3	25.3			1.8	1.4	1.0	—
ON	OFF	ON	ON	ON	51.7	51.7	38.7	38.7	25.8	25.8			1.9	1.4	1.0	—
ON	ON	OFF	OFF	OFF	52.7	52.7	39.5	39.5	26.3	26.3			2.0	1.5	1.0	—
ON	ON	OFF	OFF	ON	53.8	53.8	40.3	40.3	26.9	26.9			2.0	1.5	1.0	—
ON	ON	OFF	ON	OFF	54.9	54.9	41.1	41.1	27.4	27.4			2.1	1.5	1.1	—
ON	ON	OFF	ON	ON	55.9	55.9	41.9	41.9	27.9	27.9			2.2	1.6	1.1	—
ON	ON	ON	OFF	OFF	57.0	57.0	42.7	42.7	28.5	28.5			2.2	1.6	1.1	—
ON	ON	ON	OFF	ON	58.0	58.0	43.5	43.5	29.0	29.0			2.3	1.6	1.1	—
ON	ON	ON	ON	OFF	59.1	59.1	44.3	44.3	29.5	29.5			2.4	1.6	1.1	—
ON	ON	ON	ON	ON	60.1	60.1	45.0	45.0	30.0	30.0			2.4	1.6	1.1	—
ON	ON	ON	ON	ON	61.2	61.2	45.9	45.9	30.6	30.6			2.5	1.7	1.2	—

■ 呼称速度：15

DIP SW					周速				接続力(N)		トルク(N·m)		電流値(A)			
SW1	SW2	SW3	SW4	SW5	無負荷	定格	RUN A+B 75%	RUN B 50%	定格	起動	定格	起動	RUN A	RUN A+B	RUN B	起動
OFF	OFF	OFF	OFF	OFF	2.4	2.4							0.4	—	—	—
OFF	OFF	OFF	ON	OFF	3.4	3.4	2.5	2.5					0.5	0.4	—	—
OFF	OFF	OFF	ON	ON	4.2	4.2	3.1	3.1					0.5	0.5	—	—
OFF	OFF	ON	OFF	OFF	5.1	5.1	3.8	3.8	2.5	2.5			0.6	0.5	0.4	—
OFF	OFF	ON	OFF	ON	6.0	6.0	4.5	4.5	3.0	3.0			0.7	0.5	0.4	—
OFF	OFF	ON	ON	OFF	6.8	6.8	5.1	5.1	3.4	3.4			0.7	0.6	0.5	—
OFF	OFF	ON	ON	ON	7.7	7.7	5.7	5.7	3.8	3.8			0.8	0.7	0.5	—
OFF	ON	OFF	OFF	OFF	8.5	8.5	6.3	6.3	4.2	4.2			0.9	0.7	0.5	—
OFF	ON	OFF	OFF	ON	9.4	9.4	7.0	7.0	4.7	4.7			0.9	0.7	0.6	—
OFF	ON	OFF	ON	OFF	10.3	10.3	7.7	7.7	5.1	5.1			1.0	0.8	0.6	—
OFF	ON	OFF	ON	ON	11.1	11.1	8.3	8.3	5.5	5.5			1.1	0.9	0.6	—
OFF	ON	ON	OFF	OFF	12.0	12.0	9.0	9.0	6.0	6.0			1.1	0.9	0.7	—
OFF	ON	ON	OFF	ON	12.8	12.8	9.6	9.6	6.4	6.4			1.2	0.9	0.7	—
OFF	ON	ON	ON	OFF	13.7	13.7	10.2	10.2	6.8	6.8			1.3	1.0	0.7	—
OFF	ON	ON	ON	ON	14.5	14.5	10.8	10.8	7.2	7.2			1.3	1.0	0.8	—
OFF	ON	ON	ON	ON	15.4	15.4	11.5	11.5	7.7	7.7			1.4	1.1	0.8	—
ON	OFF	OFF	OFF	OFF	16.3	16.3	12.2	12.2	8.1	8.1			1.5	1.1	0.8	—
ON	OFF	OFF	OFF	ON	17.1	17.1	12.8	12.8	8.5	8.5			1.6	1.2	0.9	—
ON	OFF	OFF	ON	OFF	18.0	18.0	13.5	13.5	9.0	9.0			1.6	1.2	0.9	—
ON	OFF	OFF	ON	ON	18.8	18.8	14.1	14.1	9.4	9.4			1.7	1.3	0.9	—
ON	OFF	ON	OFF	OFF	19.7	19.7	14.7	14.7	9.8	9.8			1.8	1.3	1.0	—
ON	OFF	ON	OFF	ON	20.6	20.6	15.4	15.4	10.3	10.3			1.8	1.4	1.0	—
ON	OFF	ON	ON	OFF	21.0	21.0	15.7	15.7	10.5	10.5			1.9	1.4	1.0	—
ON	OFF	ON	ON	ON	21.4	21.4	16.0	16.0	10.7	10.7			2.0	1.5	1.0	—
ON	ON	OFF	OFF	OFF												

■ 呼称速度：60

DIP SW					周速				接続力 (N)		トルク (N·m)		電流値 (A)			
SW1	SW2	SW3	SW4	SW5	RUN A 100%	RUN A+B 75%	RUN B 50%		定格	起動	定格	起動	RUN A	RUN A+B	RUN B	起動
無負荷	定格	無負荷	定格	無負荷	定格	無負荷	定格									
OFF	OFF	OFF	OFF	OFF	10.2	10.2						0.4	—	—	—	
OFF	OFF	OFF	OFF	ON	14.0	14.0	10.5	10.5				0.5	0.4	—	—	
OFF	OFF	OFF	ON	OFF	17.5	17.5	13.1	13.1				0.5	0.5	—	—	
OFF	OFF	OFF	ON	ON	21.1	21.1	15.8	15.8	10.5	10.5		0.6	0.5	0.4	—	
OFF	OFF	ON	OFF	OFF	24.6	24.6	18.4	18.4	12.3	12.3		0.7	0.5	0.4	—	
OFF	OFF	ON	OFF	ON	28.1	28.1	21.0	21.0	14.0	14.0		0.7	0.6	0.5	—	
OFF	OFF	ON	ON	OFF	31.6	31.6	23.7	23.7	15.8	15.8		0.8	0.7	0.5	—	
OFF	OFF	ON	ON	ON	35.1	35.1	26.3	26.3	17.5	17.5		0.9	0.7	0.5	—	
OFF	ON	OFF	OFF	OFF	38.7	38.7	29.0	29.0	19.3	19.3		0.9	0.7	0.6	—	
OFF	ON	OFF	OFF	ON	42.2	42.2	31.6	31.6	21.1	21.1		1.0	0.8	0.6	—	
OFF	ON	OFF	ON	OFF	45.7	45.7	34.2	34.2	22.8	22.8		1.1	0.9	0.6	—	
OFF	ON	OFF	ON	ON	49.2	49.2	36.9	36.9	24.6	24.6		1.1	0.9	0.7	—	
OFF	ON	ON	OFF	OFF	52.7	52.7	39.5	39.5	26.3	26.3		1.2	0.9	0.7	—	
OFF	ON	ON	OFF	ON	56.3	56.3	42.2	42.2	28.1	28.1		1.3	1.0	0.7	—	
OFF	ON	ON	ON	OFF	59.8	59.8	44.8	44.8	29.9	29.9		1.3	1.0	0.8	—	
OFF	ON	ON	ON	ON	63.3	63.3	47.4	47.4	31.6	31.6		1.4	1.1	0.8	—	
ON	OFF	OFF	OFF	OFF	66.8	66.8	50.1	50.1	33.4	33.4	23.5	130.0	0.7	4.0	3.0	
ON	OFF	OFF	OFF	ON	70.3	70.3	52.7	52.7	35.1	35.1		1.6	1.2	0.9	—	
ON	OFF	OFF	ON	OFF	73.9	73.9	55.4	55.4	36.9	36.9		1.6	1.2	0.9	—	
ON	OFF	OFF	ON	ON	77.4	77.4	58.0	58.0	38.7	38.7		1.7	1.3	0.9	—	
ON	OFF	ON	OFF	OFF	80.9	80.9	60.6	60.6	40.4	40.4		1.8	1.3	1.0	—	
ON	OFF	ON	OFF	ON	84.4	84.4	63.3	63.3	42.2	42.2		1.8	1.4	1.0	—	
ON	OFF	ON	ON	OFF	86.2	86.2	64.6	64.6	43.1	43.1		1.9	1.4	1.0	—	
ON	OFF	ON	ON	ON	87.9	87.9	65.9	65.9	43.9	43.9		2.0	1.5	1.0	—	
ON	ON	OFF	OFF	OFF	89.7	89.7	67.2	67.2	44.8	44.8		2.0	1.5	1.0	—	
ON	ON	OFF	OFF	ON	91.5	91.5	68.6	68.6	45.7	45.7		2.1	1.5	1.1	—	
ON	ON	OFF	ON	OFF	93.2	93.2	69.9	69.9	46.6	46.6		2.2	1.6	1.1	—	
ON	ON	OFF	ON	ON	95.0	95.0	71.2	71.2	47.5	47.5		2.2	1.6	1.1	—	
ON	ON	ON	OFF	OFF	96.7	96.7	72.5	72.5	48.3	48.3		2.3	1.6	1.1	—	
ON	ON	ON	OFF	ON	98.5	98.5	73.8	73.8	49.2	49.2		2.4	1.6	1.1	—	
ON	ON	ON	ON	OFF	100.2	100.2	75.1	75.1	50.1	50.1		2.4	1.6	1.1	—	
ON	ON	ON	ON	ON	102.0	102.0	76.5	76.5	51.0	51.0		2.5	1.7	1.2	—	

■ 呼称速度：75

DIP SW					周速				接続力 (N)		トルク (N·m)		電流値 (A)			
SW1	SW2	SW3	SW4	SW5	RUN A 100%	RUN A+B 75%	RUN B 50%		定格	起動	定格	起動	RUN A	RUN A+B	RUN B	起動
無負荷	定格	無負荷	定格	無負荷	定格	無負荷	定格									
OFF	OFF	OFF	OFF	OFF	12.4	12.4						0.4	—	—	—	
OFF	OFF	OFF	OFF	ON	17.1	17.1	12.8	12.8				0.5	0.4	—	—	
OFF	OFF	OFF	ON	OFF	21.4	21.4	16.0	16.0				0.5	0.5	—	—	
OFF	OFF	OFF	ON	ON	25.7	25.7	19.2	19.2	12.8	12.8		0.6	0.5	0.4	—	
OFF	OFF	ON	OFF	OFF	30.0	30.0	22.5	22.5	15.0	15.0		0.7	0.5	0.4	—	
OFF	OFF	ON	OFF	ON	34.3	34.3	25.7	25.7	17.1	17.1		0.7	0.6	0.5	—	
OFF	OFF	ON	ON	OFF	38.6	38.6	28.9	28.9	19.3	19.3		0.8	0.7	0.5	—	
OFF	OFF	ON	ON	ON	42.9	42.9	32.1	32.1	21.4	21.4		0.9	0.7	0.5	—	
OFF	ON	OFF	OFF	OFF	47.2	47.2	35.4	35.4	23.6	23.6		0.9	0.7	0.6	—	
OFF	ON	OFF	OFF	ON	51.5	51.5	38.6	38.6	25.7	25.7		1.0	0.8	0.6	—	
OFF	ON	OFF	ON	OFF	55.8	55.8	41.8	41.8	27.9	27.9		1.1	0.9	0.6	—	
OFF	ON	OFF	ON	ON	60.1	60.1	45.0	45.0	30.0	30.0		1.1	0.9	0.7	—	
OFF	ON	ON	OFF	OFF	64.4	64.4	48.3	48.3	32.2	32.2		1.2	0.9	0.7	—	
OFF	ON	ON	OFF	ON	68.6	68.6	51.4	51.4	34.3	34.3		1.3	1.0	0.7	—	
OFF	ON	ON	ON	OFF	72.9	72.9	54.6	54.6	36.4	36.4		1.3	1.0	0.8	—	
OFF	ON	ON	ON	ON	77.2	77.2	57.9	57.9	38.6	38.6		1.4	1.1	0.8	—	
ON	OFF	OFF	OFF	OFF	81.5	81.5	61.1	61.1	40.7	40.7	19.3	106.6	0.5	3.2	3.0	
ON	OFF	OFF	OFF	ON	85.8	85.8	64.3	64.3	42.9	42.9		1.6	1.2	0.9	—	
ON	OFF	OFF	ON	OFF	90.1	90.1	67.5	67.5	45.0	45.0		1.6	1.2	0.9	—	
ON	OFF	OFF	ON	ON	94.4	94.4	70.8	70.8	47.2	47.2		1.7	1.3	0.9	—	
ON	OFF	ON	OFF	OFF	98.7	98.7	74.0	74.0	49.3	49.3		1.8	1.3	1.0	—	
ON	OFF	ON	OFF	ON	103.0	103.0	77.2	77.2	51.5	51.5		1.8	1.4	1.0	—	
ON	OFF	ON	ON	OFF	105.1	105.1	78.8	78.8	52.5	52.5		1.9	1.4	1.0	—	
ON	OFF	ON	ON	ON	107.3	107.3	80.4	80.4	53.6	53.6		2.0	1.5	1.0	—	
ON	ON	OFF	OFF	OFF	109.4	109.4	82.0	82.0	54.7	54.7		2.0	1.5	1.0	—	
ON	ON	OFF	OFF	ON	111.6	111.6	83.7	83.7	55.8	55.8		2.1	1.5	1.1	—	
ON	ON	OFF	ON	OFF	113.7	113.7	85.2	85.2	56.8	56.8		2.2	1.6	1.1	—	
ON	ON	OFF	ON	ON	115.9	115.9	86.9	86.9	57.9	57.9		2.2	1.6	1.1	—	
ON	ON	ON	OFF	OFF	118.0	118.0	88.5	88.5	59.0	59.0		2.3	1.6	1.1	—	
ON	ON	ON	OFF	ON	120.2	120.2	90.1	90.1	60.1	60.1		2.4	1.6	1.1	—	
ON	ON	ON	ON	OFF	122.3	122.3	91.7	91.7	61.1	61.1		2.4	1.6	1.1	—	
ON	ON	ON	ON	ON	124.5	124.5	93.3	93.3	62.2	62.2		2.5	1.7	1.2	—	

■ 呼称速度：95

DIP SW					周速				接続力 (N)		トルク (N·m)		電流値 (A)			
SW1	SW2	SW3	SW4	SW5	RUN A 100%	RUN A+B 75%	RUN B 50%		定格	起動	定格	起動	RUN A	RUN A+B	RUN B	起動
無負荷	定格	無負荷	定格	無負荷	定格	無負荷	定格									
OFF	OFF	OFF	OFF	OFF	16.4	16.4						0.4	—	—	—	
OFF	OFF	OFF	OFF	ON	22.6	22.6	16.9	16.9				0.5	0.4	—	—	
OFF	OFF	OFF	ON	OFF	28.3	28.3	21.2	21.2				0.5	0.5	—	—	
OFF	OFF	OFF	ON	ON	34.0	34.0	25.5	25.5	17.0	17.0		0.6	0.5	0.4	—	
OFF	OFF	ON	OFF	OFF	39.6	39.6	29.7	29.7	19.8	19.8		0.7	0.5	0.4	—	
OFF	OFF	ON	OFF	ON	45.3	45.3	33.9	33.9	22.6	22.6		0.7	0.6	0.5	—	
OFF	OFF	ON	ON	OFF	51.0	51.0	38.2	38.2	25.5	25.5		0.8	0.7	0.5	—	
OFF	OFF	ON	ON	ON	56.6	56.6	42.4	42.4	28.3	28.3		0.9	0.7	0.5	—	
OFF	ON	OFF	OFF	OFF	62.3	62.3	46.7	46.7	31.1	31.1		0.9	0.7	0.6	—	
OFF	ON	OFF	OFF	ON	68.0	68.0	51.0	51.0	34.0	34.0		1.0	0.8	0.6	—	
OFF	ON	OFF	ON	OFF	73.6	73.6	55.2	55.2	36.8	36.8		1.1	0.9	0.6	—	
OFF	ON	OFF	ON	ON	79.3	79.3	59.4	59.4	39.6	39.6		1.1	0.9	0.7	—	
OFF	ON	ON	OFF	OFF	85.0	85.0	63.7	63.7	42.5	42.5		1.2	0.9	0.7	—	
OFF	ON	ON	OFF	ON	90.6	90.6	67.9	67.9	45.3	45.3		1.3	1.0	0.7	—	
OFF	ON	ON	ON	OFF	96.3	96.3	72.2	72.2	48.1	48.1		1.3	1.0	0.8	—	
OFF	ON	ON	ON	ON	102.0	102.0	76.5	76.5	51.0	51.0		1.4	1.1	0.8	—	
ON	OFF	OFF	OFF	OFF	107.6	107.6	80.7	80.7	53.8	53.8	14.6	80.7	0.4	2.4	3.0	
ON	OFF	OFF	OFF	ON	113.3	113.3	84.9	84.9	56.6	56.6		1.6	1.2	0.9	—	
ON	OFF	OFF	ON	OFF	119.0	119.0	89.2	89.2	59.5	59.5		1.6	1.2	0.9	—	
ON	OFF	OFF	ON	ON	124.6	124.6	93.4	93.4	62.3	62.3		1.7	1.3	0.9	—	
ON	OFF	ON	OFF	OFF	130.3	130.3	97.7	97.7	65.1	65.1		1.8	1.3	1.0	—	
ON	OFF	ON	OFF	ON	136.0	136.0	102.0	102.0	68.0	68.0		1.8	1.4	1.0	—	
ON	OFF	ON	ON	OFF	138.8	138.8	104.1	104.1	69.4	69.4		1.9	1.4	1.0	—	
ON	OFF	ON	ON	ON	141.6	141.6	106.2	106.2	70.8	70.8		2.0	1.5	1.0	—	
ON	ON	OFF	OFF	OFF	144.5	144.5	108.3	108.3	72.2	72.2		2.0	1.5	1.0	—	
ON	ON	OFF	OFF	ON	147.3	147.3	110.4	110.4	73.6	73.6		2.1	1.5	1.1	—	
ON	ON	OFF	ON	OFF	150.1	150.1	112.5	112.5	75.0	75.0		2.2	1.6	1.1	—	
ON	ON	OFF	ON	ON												